

NALP11 Antibody

Catalog No: #25185

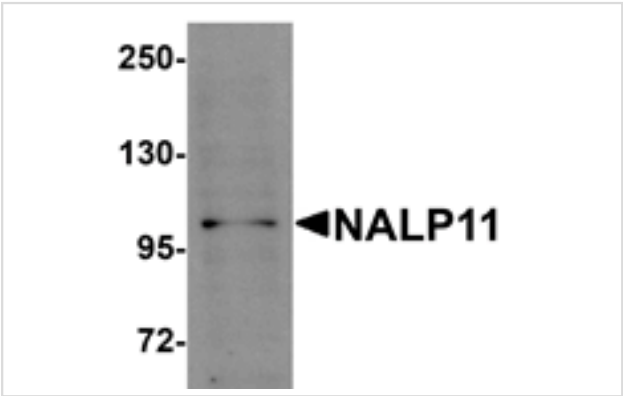


Orders: order@signalwayantibody.com
Support: tech@signalwayantibody.com

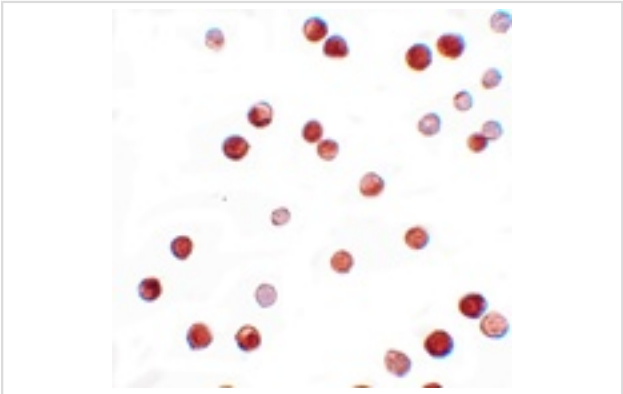
Description

| | |
|-----------------------|---|
| Product Name | NALP11 Antibody |
| Host Species | Rabbit |
| Clonality | Polyclonal |
| Purification | Affinity chromatography purified via peptide column |
| Applications | ELISA WB ICC |
| Species Reactivity | Hu |
| Immunogen Type | Peptide |
| Immunogen Description | Raised against a 15 amino acid peptide near the carboxy terminus of human NALP11. |
| Target Name | NALP11 |
| Other Names | NACHT, LRR and PYD domains-containing protein 11, NLRP11, NOD17, CLR19.6, PAN10, PYPAF6 |
| Accession No. | Swiss-Prot:P59045Gene ID:204801 |
| Uniprot | P59045 |
| GeneID | 204801; |
| Concentration | 1mg/ml |
| Formulation | Supplied in PBS containing 0.02% sodium azide. |
| Storage | Can be stored at -20°C, stable for one year. As with all antibodies care should be taken to avoid repeated freeze thaw cycles. Antibodies should not be exposed to prolonged high temperatures. |

Images



Western blot analysis of NALP11 in HeLa cell lysate with NALP11 antibody at 1 ug/mL.



Immunocytochemistry of NALP11 in HeLa cells with NALP11 antibody at 2.5 ug/mL.

Background

NALP proteins are cytoplasmic proteins that form a subfamily within the larger CATERPILLER family and are thought to play a crucial role in cell proliferation and reproduction. Like all other NALP family members, NALP11 has a C-terminal leucine-rich repeat (LRR) region, an N-terminal Pyrin domain (PYD) followed by a NACHT domain, and a NACHT-associated domain. While little is known about the function of NALP11, it has been suggested that it has been associated with Crohn's disease.

Note: This product is for in vitro research use only