

## NALP14 Antibody

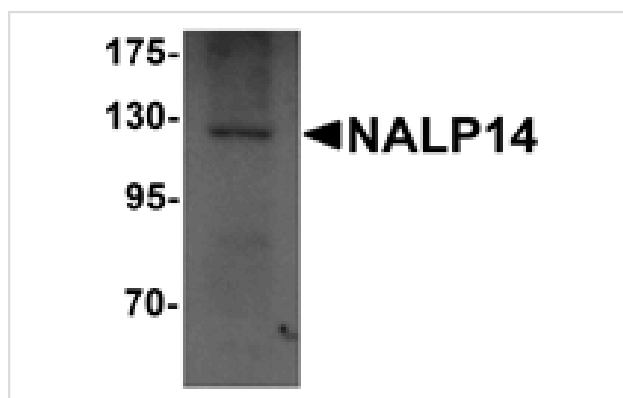
Catalog No: #25188

Orders: [order@signalwayantibody.com](mailto:order@signalwayantibody.com)Support: [tech@signalwayantibody.com](mailto:tech@signalwayantibody.com)

## Description

Product Name	NALP14 Antibody
Host Species	Rabbit
Clonality	Polyclonal
Purification	Affinity chromatography purified via peptide column
Applications	ELISA WB
Species Reactivity	Hu Ms Rt
Immunogen Type	Peptide
Immunogen Description	Raised against a 16 amino acid peptide near the amino terminus of human NALP14.
Target Name	NALP14
Other Names	NACHT, LRR and PYD domains-containing protein 14, NLRP14, CLR11.2, PAN8, NOD5, GC-LRR
Accession No.	Swiss-Prot:Q86W24Gene ID:338323
Uniprot	Q86W24
GeneID	338323;
Concentration	1mg/ml
Formulation	Supplied in PBS containing 0.02% sodium azide.
Storage	Can be stored at -20°C, stable for one year. As with all antibodies care should be taken to avoid repeated freeze thaw cycles. Antibodies should not be exposed to prolonged high temperatures.

## Images



Western blot analysis of NALP14 in rat brain tissue lysate with NALP14 antibody at 1 ug/mL.

## Background

NALP proteins are cytoplasmic proteins that form a subfamily within the larger CATERPILLER family and are thought to play a crucial role in cell proliferation and reproduction. Like all other NALP family members, NALP14 has a C-terminal leucine-rich repeat (LRR) region, an N-terminal Pyrin domain (PYD) followed by a NACHT domain, and a NACHT-associated domain. While little is known about the function of NALP14, it has been suggested that it may play a role in spermatogenesis and that mutations in the NALP14 gene might cause spermatogenic failure.

---

Note: This product is for in vitro research use only