

## CXL14 Polyclonal Antibody

Catalog No: #48339

Package Size: #48339-1 50ul #48339-2 100ul

Orders: [order@signalwayantibody.com](mailto:order@signalwayantibody.com)Support: [tech@signalwayantibody.com](mailto:tech@signalwayantibody.com)

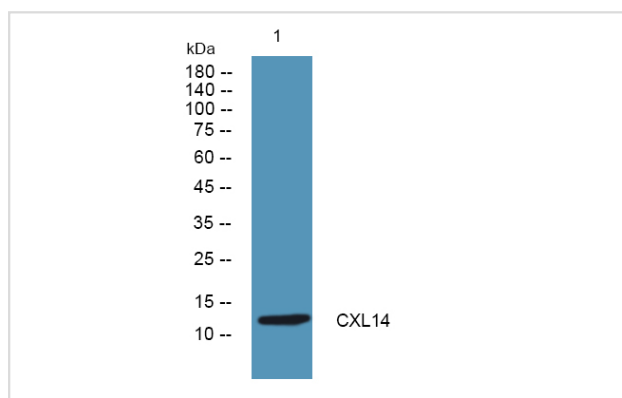
## Description

Product Name	CXL14 Polyclonal Antibody
Host Species	Rabbit
Clonality	Polyclonal
Isotype	IgG
Purification	The antibody was affinity-purified from rabbit antiserum by affinity-chromatography using epitope-specific immunogen.
Applications	WB;ELISA
Species Reactivity	Human; Mouse
Specificity	CXL14 Polyclonal Antibody detects endogenous levels of protein.
Immunogen Description	Synthesized peptide derived from part region of human protein
Target Name	CXCL14
Uniprot	O95715
GeneID	9547
Calculated MW	12kD
Concentration	1 mg/ml
Formulation	Liquid in PBS containing 50% glycerol, and 0.02% sodium azide.
Storage	Store at -20°C/1 year

## Application Details

WB 1:500-2000 ELISA 1:5000-20000

## Images



Note: This product is for in vitro research use only