

ZDH22 rabbit pAb

Catalog No: #48331



Package Size: #48331-1 50ul #48331-2 100ul

Orders: order@signalwayantibody.com
Support: tech@signalwayantibody.com

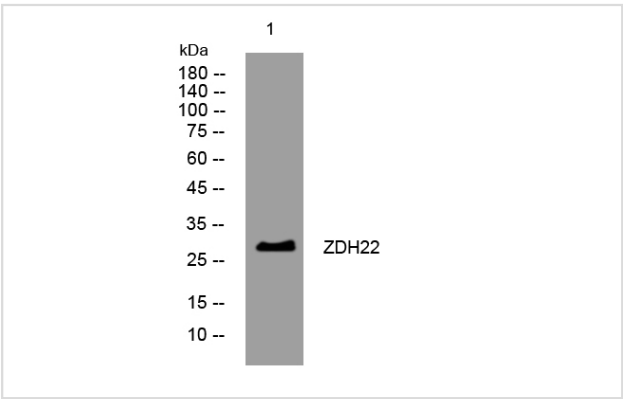
Description

Product Name	ZDH22 rabbit pAb
Host Species	Rabbit
Clonality	Polyclonal
Isotype	IgG
Purification	The antibody was affinity-purified from rabbit serum by affinity-chromatography using specific immunogen.
Applications	WB
Species Reactivity	Human; Mouse;Rat
Specificity	This antibody detects endogenous levels of ZDH22 at Human/Mouse/Rat
Immunogen Description	Synthesized peptide derived from human ZDH22
Target Name	ZDH22
Uniprot	Q8N966
GeneID	283576
Calculated MW	29kD
Concentration	1 mg/ml
Formulation	Liquid in PBS containing 50% glycerol, 0.5% BSA and 0.02% sodium azide.
Storage	Store at -20°C/1 year

Application Details

WB 1αO 500-2000

Images



Western blot analysis of lysates from MDA-MB cells, primary antibody was diluted at 1:1000, 4° over night

Note: This product is for in vitro research use only