

MSMO1 rabbit pAb

Catalog No: #48408



Package Size: #48408-1 50ul #48408-2 100ul

Orders: [order@signalwayantibody.com](mailto:order@signalwayantibody.com)  
Support: [tech@signalwayantibody.com](mailto:tech@signalwayantibody.com)

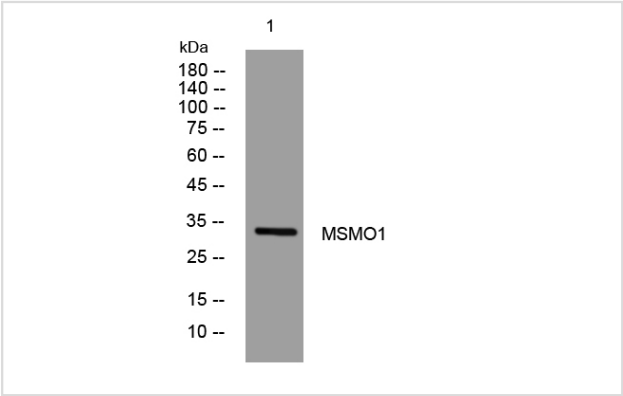
Description

Product Name	MSMO1 rabbit pAb
Host Species	Rabbit
Clonality	Polyclonal
Isotype	IgG
Purification	The antibody was affinity-purified from rabbit serum by affinity-chromatography using specific immunogen.
Applications	WB;IHC
Species Reactivity	Human; Mouse;Rat
Specificity	This antibody detects endogenous levels of MSMO1 at Human/Mouse/Rat
Immunogen Description	Synthesized peptide derived from human MSMO1
Target Name	MSMO1
Uniprot	Q15800
GeneID	6307
Calculated MW	32kD
Concentration	1 mg/ml
Formulation	Liquid in PBS containing 50% glycerol, 0.5% BSA and 0.02% sodium azide.
Storage	Store at -20°C/1 year

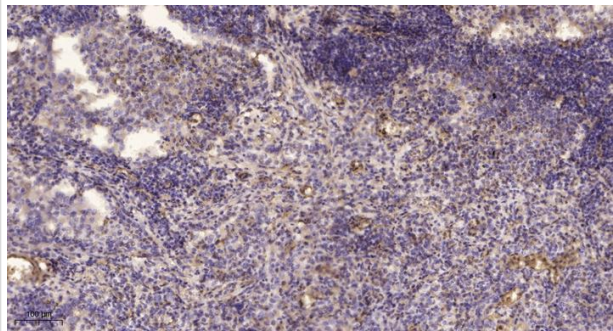
Application Details

WB 1:500-2000;IHC-p 1:50-300

Images



Western blot analysis of lysates from KB cells, primary antibody was diluted at 1:1000, 4° over night



Immunohistochemical analysis of paraffin-embedded human lung cancer.

---

Note: This product is for in vitro research use only