

# Thrombospondin 2 Polyclonal Antibody

Catalog No: #48706



Package Size: #48706-1 50ul #48706-2 100ul

Orders: [order@signalwayantibody.com](mailto:order@signalwayantibody.com)  
Support: [tech@signalwayantibody.com](mailto:tech@signalwayantibody.com)

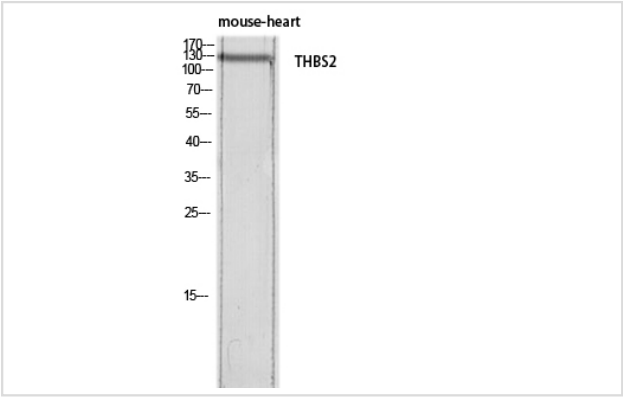
## Description

Product Name	Thrombospondin 2 Polyclonal Antibody
Host Species	Rabbit
Clonality	Polyclonal
Isotype	IgG
Applications	WB;IHC;IF;ELISA
Species Reactivity	Human;Mouse;Rat
Immunogen Description	The antiserum was produced against synthesized peptide derived from the C-terminal region of human THBS2. AA range:1000-1050
Calculated MW	130kD
Concentration	1 mg/ml
Storage	Store at -20°C/1 year

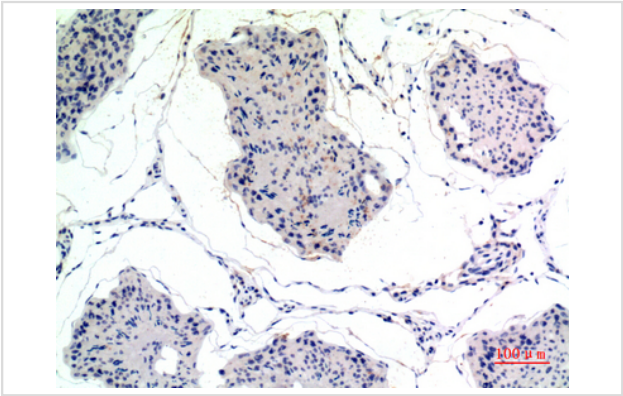
## Application Details

WB 1:500 - 1:2000. IHC-p: 1:100-1:300. ELISA: 1:10000.. IF 1:50-200

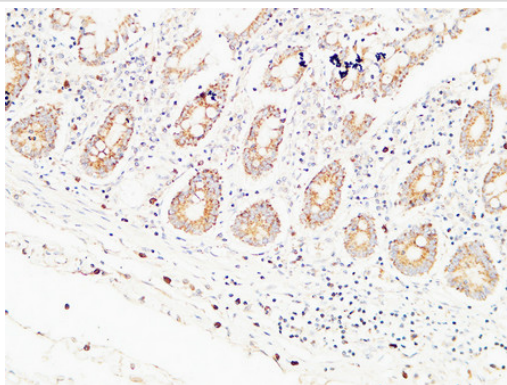
## Images



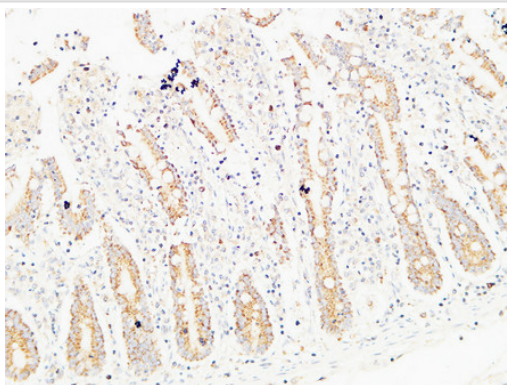
Western blot analysis of mouse-heart lysis using THBS2 antibody. Antibody was diluted at 1:500. Secondary antibody was diluted at 1:20000



Immunohistochemical analysis of paraffin-embedded rat-testis, antibody was diluted at 1:100



Immunohistochemical analysis of paraffin-embedded Human colon. 1, Antibody was diluted at 1:200(4° overnight). 2, High-pressure and temperature EDTA, pH8.0 was used for antigen retrieval. 3,Secondary antibody was diluted at 1:200(room temperature, 30min).



Immunohistochemical analysis of paraffin-embedded Human colon. 1, Antibody was diluted at 1:200(4° overnight). 2, High-pressure and temperature EDTA, pH8.0 was used for antigen retrieval. 3,Secondary antibody was diluted at 1:200(room temperature, 30min).

---

Note: This product is for in vitro research use only