

Recombinant Canine Stem Cell Factor

Catalog No: #AP60219



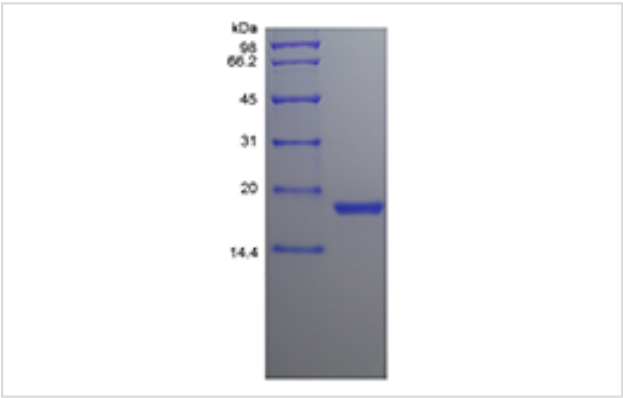
Package Size: #AP60219-1 10ug #AP60219-2 100ug #AP60219-3 500ug

Orders: order@signalwayantibody.com
Support: tech@signalwayantibody.com

Description

Product Name	Recombinant Canine Stem Cell Factor
Host Species	Escherichia coli.
Purification	> 96 % by SDS-PAGE and HPLC analyses.
Other Names	Hematopoietic Growth Factor KL, MGF
Uniprot	Q06220
GeneID	403507
Calculated MW	Approximately 18.4 kDa, a single non-glycosylated polypeptide chain containing 165 amino acids.
Target Sequence	KGICGKRVTG DVKDVTKLVA NLPKDYKIAL KYVPGMDVLP SHCWISVMVE QLSVSLTDLL DKFSNISEGL SNYSIIDKLK KIVDDLVECT EGYSFENVKK APKSPELRLF TPEEFFRIFN RSIDAFKDLK TVASKSSECV VSSTLSPDKD SRVSVTKPFM LPPVA
Formulation	Lyophilized from a 0.2 µm filtered concentrated solution in 2 x PBS, pH 7.4.
Storage	Use a manual defrost freezer and avoid repeated freeze-thaw cycles.- 12 months from date of receipt, -20 to -70 °C as supplied.- 1 month, 2 to 8 °C under sterile conditions after reconstitution.- 3 months, -20 to -70 °C under sterile conditions after reconstitution.

Images



Background

Stem Cell Factor (SCF) which binds to the c-Kit receptor is produced by fibroblasts and endothelial cells. The soluble and transmembrane forms of the protein are formed by alternative splicing of the same RNA transcript and the presence of both soluble and transmembrane SCF is required for normal hematopoietic function. SCF plays an important role in hematopoiesis, spermatogenesis and melanogenesis and it promotes mast cell adhesion, migration, proliferation, and survival. Soluble canine SCF shares 88 %, 93 %, 86 %, 83 %, 76 %, 76 %, 86 % and 88 % a.a. sequence identity with porcine, feline, bovine, human, mouse, rat, goat and equine SCF, respectively. Cells known to express SCF include endothelial cells, fibroblasts and keratinocytes .

Note: This product is for in vitro research use only