

# Recombinant Human Macrophage-Derived Chemokine/CCL22

Catalog No: #AP60315

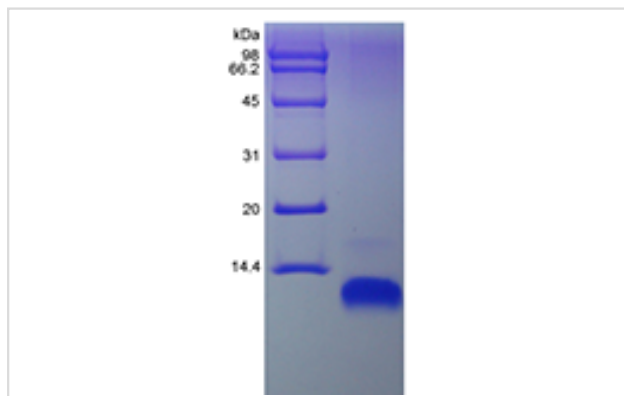
Package Size: #AP60315-1 5ug #AP60315-2 100ug #AP60315-3 500ug

Orders: [order@signalwayantibody.com](mailto:order@signalwayantibody.com)Support: [tech@signalwayantibody.com](mailto:tech@signalwayantibody.com)

## Description

Product Name	Recombinant Human Macrophage-Derived Chemokine/CCL22
Host Species	Escherichia coli.
Purification	> 97 % by SDS-PAGE and HPLC analyses.
Other Names	STCP-1, MDC (1-69), Macrophage-derived Chemokine
Uniprot	O00626
GeneID	6367
Calculated MW	Approximately 8.1 kDa, a single, non-glycosylated polypeptide chain containing 69 amino acids.
Target Sequence	GPYGANMEDS VCCRDYVRYR LPLRVVKHFY WTSDSCPRPG VLLTFRDKE ICADPRVPWV KMILNKLSQ
Formulation	Lyophilized from a 0.2 µm filtered concentrated solution in 20 mM PB, pH7.4, 500 mM NaCl.
Storage	Use a manual defrost freezer and avoid repeated freeze-thaw cycles.- 12 months from date of receipt, -20 to -70 °C as supplied.- 1 month, 2 to 8 °C under sterile conditions after reconstitution.- 3 months, -20 to -70 °C under sterile conditions after reconstitution.

## Images



## Background

CCL22 is a protein that in humans is encoded by the CCL22 gene, which locates on the Chr. 16. The protein is highly expressed in macrophage, monocyte-derived dendritic cell and thymus, additionally, also detected in the tissues of thymus, lymph node and appendix. CCL22 can bind to CCR4, and is a chemoattractant for monocytes, monocyte-derived dendritic cells, and natural killer cells, but not for neutrophils, eosinophils, and resting T-lymphocytes. After secreted from monocyte-derived dendritic cells, the protein can be proteolytic cleaved into three forms: MDC (3-69), MDC (5-69), MDC (7-69).

Note: This product is for in vitro research use only