

# PLAC3 Antibody

Catalog No: #25205

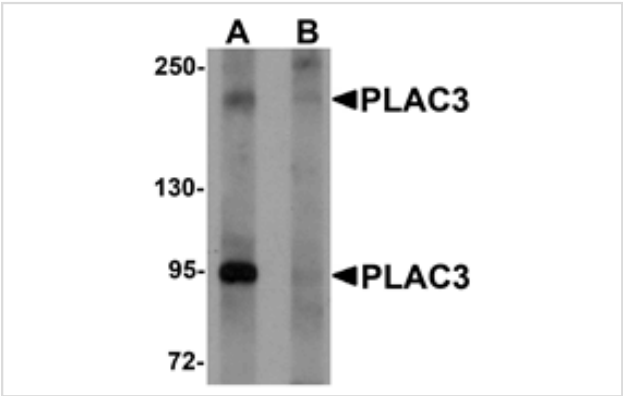


Orders: [order@signalwayantibody.com](mailto:order@signalwayantibody.com)  
Support: [tech@signalwayantibody.com](mailto:tech@signalwayantibody.com)

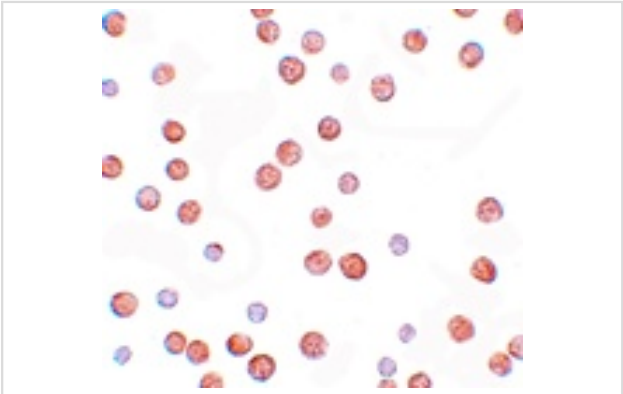
## Description

Product Name	PLAC3 Antibody
Host Species	Rabbit
Clonality	Polyclonal
Purification	Affinity chromatography purified via peptide column
Applications	ELISA WB ICC
Species Reactivity	Hu Ms Rt
Immunogen Type	Peptide
Immunogen Description	Raised against a 15 amino acid peptide near the amino terminus of human PLAC3.
Target Name	PLAC3
Other Names	Placenta-specific protein 3, Pappalysin 2, pregnancy-associated plasma protein A2, PAPP-A2, PAPPA2
Accession No.	Swiss-Prot:Q9BXP8Gene ID:60676
Uniprot	Q9BXP8
GeneID	60676;
Concentration	1mg/ml
Formulation	Supplied in PBS containing 0.02% sodium azide.
Storage	Can be stored at -20°C, stable for one year. As with all antibodies care should be taken to avoid repeated freeze thaw cycles. Antibodies should not be exposed to prolonged high temperatures.

## Images



Western blot analysis of PLAC3 in HeLa cell lysate with PLAC3 antibody at 1 ug/mL in (A) the absence and (B) the presence of blocking peptide.



Immunocytochemistry of PLAC3 in HeLa cells with PLAC3 antibody at 10 ug/mL.

## Background

---

PLAC3 (placenta-specific protein 3), also known as PAPP-A2, is a metalloproteinase that cleaves the insulin-like growth factor-binding protein (IGFBP)-5 in a IGF-independent fashion. It has been suggested that the cleavage of IGFBP-5 and to a lesser extent IGFBP-3 produced in the maternal decidua promotes fetoplacental growth. Recent studies have shown elevated levels of PLAC3 in hypertensive disorders of pregnancy including preeclampsia and HELLP (hemolysis, elevated liver enzymes, and low platelets) syndrome.

---

Note: This product is for in vitro research use only