

ERK1 Rabbit mAb

Catalog No: #58576

Package Size: #58576-1 50ul #58576-2 100ul

Orders: order@signalwayantibody.comSupport: tech@signalwayantibody.com

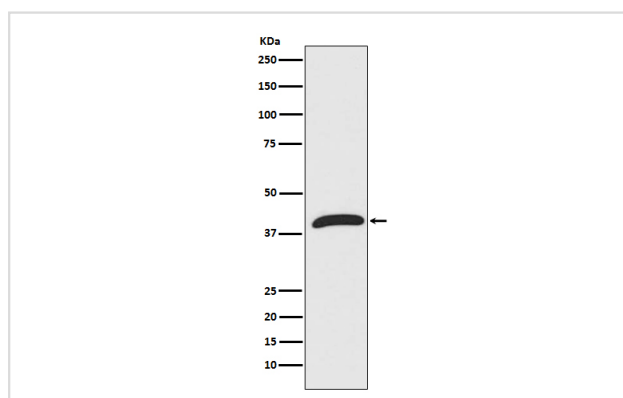
Description

Product Name	ERK1 Rabbit mAb
Host Species	Rabbit
Clonality	Monoclonal
Isotype	Rabbit IgG
Purification	Affinity-chromatography
Applications	WB IHC
Species Reactivity	Human Mouse Rat
Specificity	ERK1 Antibody detects endogenous levels of total ERK1
Immunogen Description	A synthesized peptide derived from human ERK1
Other Names	MAPK 1; MAPK3; MK03; MNK1; ERK-1; ERK1; ERT2; MAP kinase 1; P44-ERK1;
Accession No.	Uniprot:P27361
Uniprot	P27361
Calculated MW	44kDa
Formulation	Rabbit IgG in phosphate buffered saline , pH 7.4, 150mM NaCl, 0.02% sodium azide and 50% glycerol.
Storage	Store at +4°C short term. Store at -20°C long term. Avoid freeze / thaw cycle.

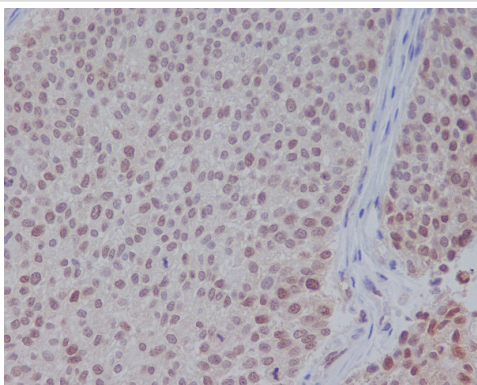
Application Details

WB 1:500~1:2000 IHC 1:50~1:200

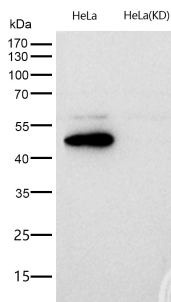
Images



Western blot analysis of ERK1 in Jurkat cell lysate.



Immunohistochemical analysis of paraffin-embedded human bladder, using ERK1 Antibody.



All lanes use the Antibody at 1:1K dilution for 1 hour at room temperature.

Product Description

p44 MAP kinase plays a critical role in the regulation of cell growth and differentiation. Activated by a wide variety of extracellular signals including growth and neurotrophic factors, cytokines, hormones and neurotransmitters.

Background

p44 MAP kinase plays a critical role in the regulation of cell growth and differentiation. Activated by a wide variety of extracellular signals including growth and neurotrophic factors, cytokines, hormones and neurotransmitters.

Note: This product is for in vitro research use only