

STAT6 Rabbit mAb

Catalog No: #58625

Package Size: #58625-1 50ul #58625-2 100ul

Orders: order@signalwayantibody.com

Support: tech@signalwayantibody.com

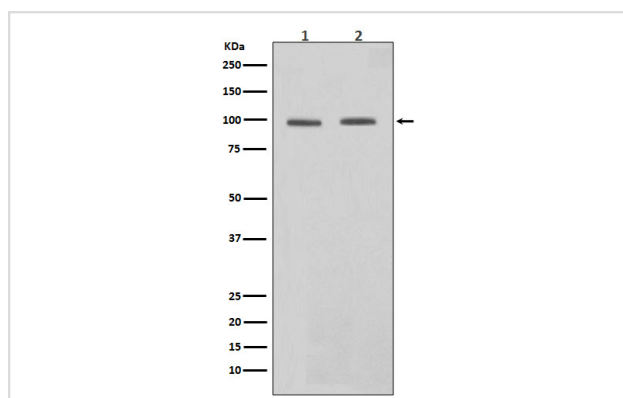
Description

Product Name	STAT6 Rabbit mAb
Host Species	Rabbit
Clonality	Monoclonal
Isotype	Rabbit IgG
Purification	Affinity-chromatography
Applications	WB ICC/IF FC
Species Reactivity	Human
Specificity	STAT6 Antibody detects endogenous levels of total STAT6
Immunogen Description	A synthesized peptide derived from human STAT6
Other Names	IL-4 Stat; IL-4-STAT; interleukin-4 induced; STAT, interleukin4-induced; STAT6; STAT6B; STAT6C;
Accession No.	Uniprot:P42226
Uniprot	P42226
Formulation	Rabbit IgG in phosphate buffered saline , pH 7.4, 150mM NaCl, 0.02% sodium azide and 50% glycerol.
Storage	Store at +4°C short term. Store at -20°C long term. Avoid freeze / thaw cycle.

Application Details

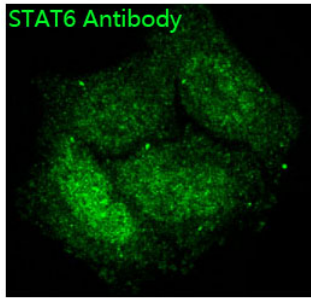
WB 1:500~1:2000 ICC/IF 1:50~1:200 FC 1:50

Images

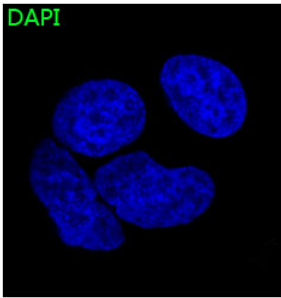


Western blot analysis of STAT6 in expression (1)Daudi cell lysate;(2)HeLa cell lysate.

STAT6 Antibody



DAPI



Immunofluorescent analysis of HeLa cells, using STAT6 Antibody .

Product Description

STAT6 transcription factor of the STAT family. Plays a central role in IL4-mediated biological responses. Induces the expression of BCL2L1/BCL-X(L), which is responsible for the anti-apoptotic activity of IL4.

Background

STAT6 transcription factor of the STAT family. Plays a central role in IL4-mediated biological responses. Induces the expression of BCL2L1/BCL-X(L), which is responsible for the anti-apoptotic activity of IL4.

Note: This product is for in vitro research use only