

HAPLN1 Rabbit mAb

Catalog No: #58681



Package Size: #58681-1 50ul #58681-2 100ul

Orders: [order@signalwayantibody.com](mailto:order@signalwayantibody.com)  
Support: [tech@signalwayantibody.com](mailto:tech@signalwayantibody.com)

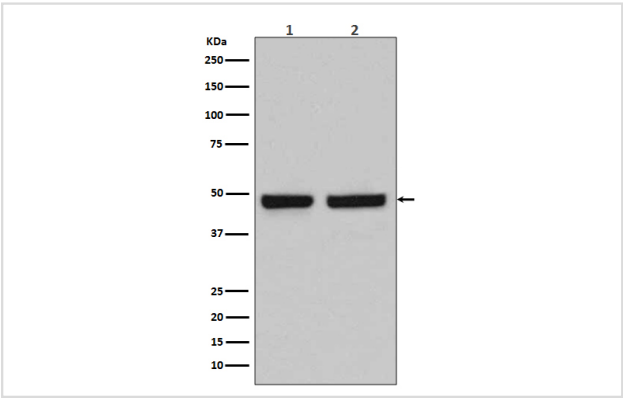
Description

Product Name	HAPLN1 Rabbit mAb
Host Species	Rabbit
Clonality	Monoclonal
Isotype	Rabbit IgG
Purification	Affinity-chromatography
Applications	WB IHC ICC/IF
Species Reactivity	Human Mouse Rat
Specificity	HAPLN1 Antibody detects endogenous levels of total HAPLN1
Immunogen Description	A synthesized peptide derived from human HAPLN1
Other Names	Hyaluronan and proteoglycan link protein 1; Cartilage-linking protein 1; Cartilage-link protein; Proteoglycan link protein; HAPLN1; CRTL1
Accession No.	Uniprot:P10915
Uniprot	P10915
Formulation	Rabbit IgG in phosphate buffered saline , pH 7.4, 150mM NaCl, 0.02% sodium azide and 50% glycerol.
Storage	Store at +4°C short term. Store at -20°C long term. Avoid freeze / thaw cycle.

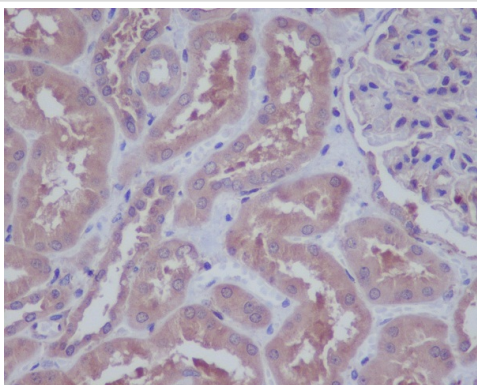
Application Details

WB 1:500~1:2000 IHC 1:50~1:200 ICC/IF 1:50~1:200

Images



Western blot analysis of HAPLN1 expression in (1) Caco2 cell lysate; (2) Mouse spleen lysate.



Immunohistochemical analysis of paraffin-embedded human kidney, using HAPLN1 Antibody .

## Product Description

HAPLN1 belongs to the HAPLN family. It contains 1 Ig like V type (immunoglobulin like) domain and 2 Link domains. This protein stabilizes the aggregates of proteoglycan monomers with hyaluronic acid in the extracellular cartilage matrix.

## Background

HAPLN1 belongs to the HAPLN family. It contains 1 Ig like V type (immunoglobulin like) domain and 2 Link domains. This protein stabilizes the aggregates of proteoglycan monomers with hyaluronic acid in the extracellular cartilage matrix.

Note: This product is for in vitro research use only