

STAT3 Rabbit mAb

Catalog No: #58703

Package Size: #58703-1 50ul #58703-2 100ul

Orders: order@signalwayantibody.comSupport: tech@signalwayantibody.com

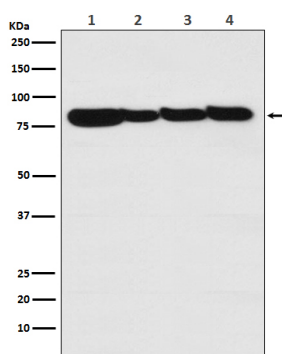
Description

Product Name	STAT3 Rabbit mAb
Host Species	Rabbit
Clonality	Monoclonal
Isotype	Rabbit IgG
Purification	Affinity-chromatography
Applications	WB IHC ICC/IF
Species Reactivity	Human Mouse Rat
Specificity	STAT3 Antibody detects endogenous levels of total STAT3
Immunogen Description	A synthesized peptide derived from human STAT3
Other Names	APRF;Acute-phase response factor;Signal transducer and activator of transcription 3; STAT3; HIES;
Accession No.	Uniprot:P40763
Uniprot	P40763
Calculated MW	88kDa
Formulation	Rabbit IgG in phosphate buffered saline , pH 7.4, 150mM NaCl, 0.02% sodium azide and 50% glycerol.
Storage	Store at +4°C short term. Store at -20°C long term. Avoid freeze / thaw cycle.

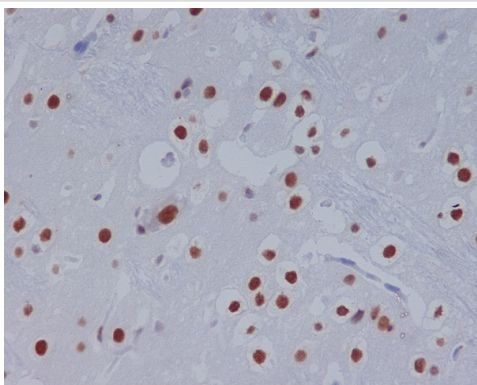
Application Details

WB 1:1000~1:2000 IHC 1:50~1:200 ICC/IF 1:50~1:200

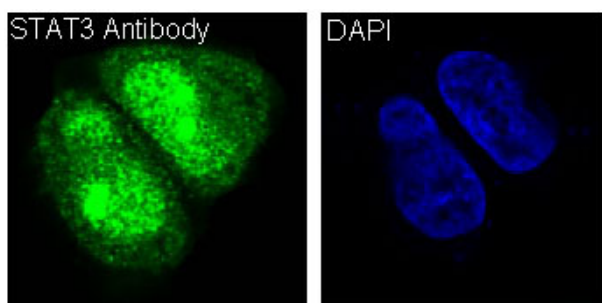
Images



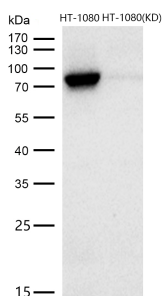
Western blot analysis of STAT3 expression in (1) A431 cell lysate; (2) Human liver lysate; (3) Mouse heart lysate; (4) Rat brain lysate.



Immunohistochemical analysis of paraffin-embedded rat brain, using STAT3 Antibody.



Immunofluorescent analysis of HeLa cells treated with IFN α , using STAT3 Antibody.



All lanes use the Antibody at 1:1K dilution for 1 hour at room temperature.

Product Description

Transcription factor that binds to the interleukin-6 (IL-6)-responsive elements identified in the promoters of various acute-phase protein genes. Activated by IL31 through IL31RA. The protein encoded by this gene is a member of the STAT protein family. In response to cytokines and growth factors, STAT family members are phosphorylated by the receptor associated kinases, and then form homo- or heterodimers that translocate to the cell nucleus where they act as transcription activators.

Background

Transcription factor that binds to the interleukin-6 (IL-6)-responsive elements identified in the promoters of various acute-phase protein genes. Activated by IL31 through IL31RA. The protein encoded by this gene is a member of the STAT protein family. In response to cytokines and growth factors, STAT family members are phosphorylated by the receptor associated kinases, and then form homo- or heterodimers that translocate to the cell nucleus where they act as transcription activators.

Note: This product is for in vitro research use only