

## MEK1 Rabbit mAb

Catalog No: #58796

Package Size: #58796-1 50ul #58796-2 100ul

Orders: order@signalwayantibody.com

Support: tech@signalwayantibody.com

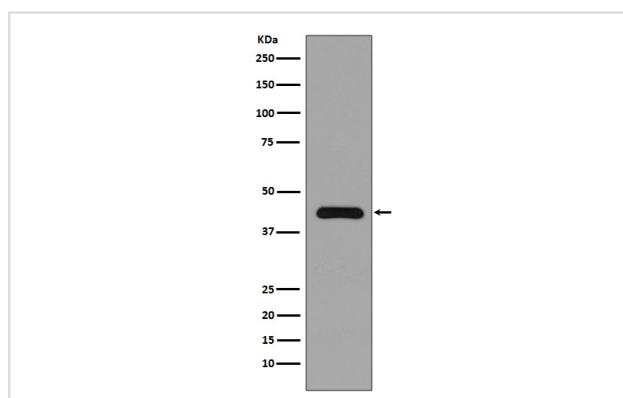
## Description

|                       |  |
|-----------------------|--|
| Product Name          | MEK1 Rabbit mAb  |
| Host Species          | Rabbit   |
| Clonality             | Monoclonal   |
| Isotype               | Rabbit IgG   |
| Purification          | Affinity-chromatography  |
| Applications          | WB IHC ICC/IF IP   |
| Species Reactivity    | Human  |
| Specificity           | MEK1 Antibody detects endogenous levels of total MEK1  |
| Immunogen Description | A synthesized peptide derived from human MEK1  |
| Other Names           | ERK activator kinase 1; MAP kinase kinase 1; MAP2K1; MAPK/ERK kinase 1; MAPKK 1; MAPKK1; MEK1; MP2K1; PRKMK1; kinase MEK1; |
| Accession No.         | Uniprot:Q02750   |
| Uniprot               | Q02750   |
| Formulation           | Rabbit IgG in phosphate buffered saline , pH 7.4, 150mM NaCl, 0.02% sodium azide and 50% glycerol.                         |
| Storage               | Store at +4°C short term. Store at -20°C long term. Avoid freeze / thaw cycle.   |

## Application Details

WB 1:500~1:2000 IHC 1:50~1:200 ICC/IF 1:50~1:200 IP 1:50

## Images



Western blot analysis of MEK1 expression in A431 cell lysate.

## Product Description

The protein encoded by this gene is a member of the dual specificity protein kinase family, which acts as a mitogen-activated protein (MAP) kinase kinase. MAP kinases, also known as extracellular signal-regulated kinases (ERKs), act as an integration point for multiple biochemical signals.

## Background

---

The protein encoded by this gene is a member of the dual specificity protein kinase family, which acts as a mitogen-activated protein (MAP) kinase kinase. MAP kinases, also known as extracellular signal-regulated kinases (ERKs), act as an integration point for multiple biochemical signals.

---

Note: This product is for in vitro research use only