

Stathmin 1 Rabbit mAb

Catalog No: #58798

Package Size: #58798-1 50ul #58798-2 100ul

Orders: order@signalwayantibody.com

Support: tech@signalwayantibody.com

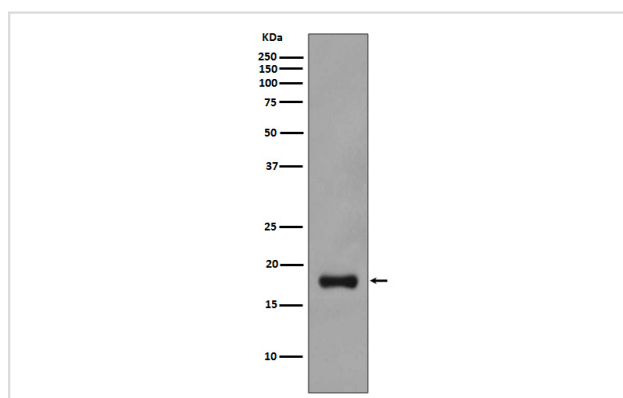
Description

Product Name	Stathmin 1 Rabbit mAb
Host Species	Rabbit
Clonality	Monoclonal
Isotype	Rabbit IgG
Purification	Affinity-chromatography
Applications	WB IHC ICC/IF IP FC
Species Reactivity	Human Mouse Rat
Specificity	Stathmin 1 Antibody detects endogenous levels of total Stathmin 1
Immunogen Description	A synthesized peptide derived from human Stathmin 1
Other Names	LAG; LAP18; Leukemia-associated gene protein; Metablastin; Oncoprotein 18; Op18; Phosphoprotein p19; pp17; pp19; PR22; Pr22 protein; Prosolin;
Accession No.	Uniprot:P16949
Uniprot	P16949
Formulation	Rabbit IgG in phosphate buffered saline , pH 7.4, 150mM NaCl, 0.02% sodium azide and 50% glycerol.
Storage	Store at +4°C short term. Store at -20°C long term. Avoid freeze / thaw cycle.

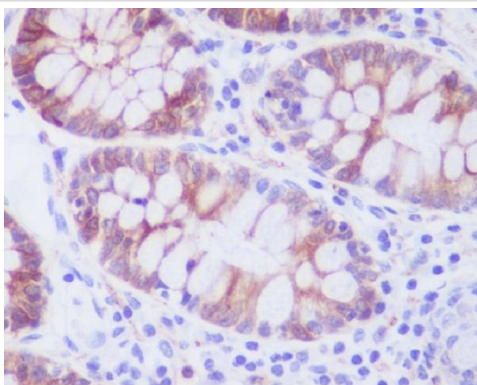
Application Details

WB 1:500~1:2000 IHC 1:50~1:100 ICC/IF 1:50~1:100 IP 1: 50 FC 1:50

Images



Western blot analysis of Stathmin 1 expression in PC-12 cell lysate.



Immunohistochemical analysis of paraffin-embedded human colon, using Stathmin 1 Antibody.

Product Description

Involved in the regulation of the microtubule (MT) filament system by destabilizing microtubules. Prevents assembly and promotes disassembly of microtubules. Phosphorylation at Ser-16 may be required for axon formation during neurogenesis. Involved in the control of the learned and innate fear.

Background

Involved in the regulation of the microtubule (MT) filament system by destabilizing microtubules. Prevents assembly and promotes disassembly of microtubules. Phosphorylation at Ser-16 may be required for axon formation during neurogenesis. Involved in the control of the learned and innate fear.

Note: This product is for in vitro research use only