

YB1 Rabbit mAb

Catalog No: #58799



Package Size: #58799-1 50ul #58799-2 100ul

Orders: [order@signalwayantibody.com](mailto:order@signalwayantibody.com)  
Support: [tech@signalwayantibody.com](mailto:tech@signalwayantibody.com)

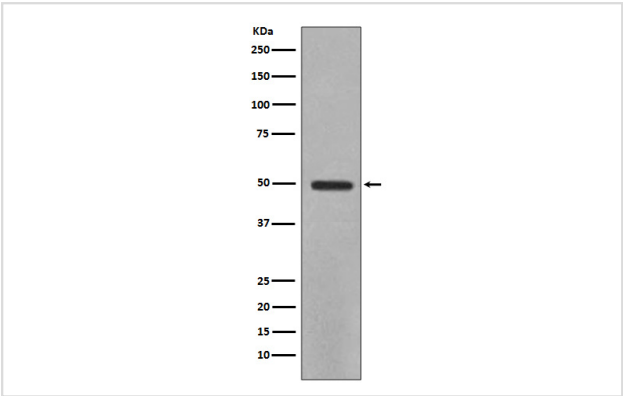
Description

Product Name	YB1 Rabbit mAb
Host Species	Rabbit
Clonality	Monoclonal
Isotype	Rabbit IgG
Purification	Affinity-chromatography
Applications	WB IHC ICC/IF IP FC
Species Reactivity	Human Mouse Rat
Specificity	YB1 Antibody detects endogenous levels of total YB1
Immunogen Description	A synthesized peptide derived from human YB1
Other Names	CBF-A; DBPB; NSEP1; p50; YB1; YBX1; DNA binding protein B;
Accession No.	Uniprot:P67809
Uniprot	P67809
Formulation	Rabbit IgG in phosphate buffered saline , pH 7.4, 150mM NaCl, 0.02% sodium azide and 50% glycerol.
Storage	Store at +4°C short term. Store at -20°C long term. Avoid freeze / thaw cycle.

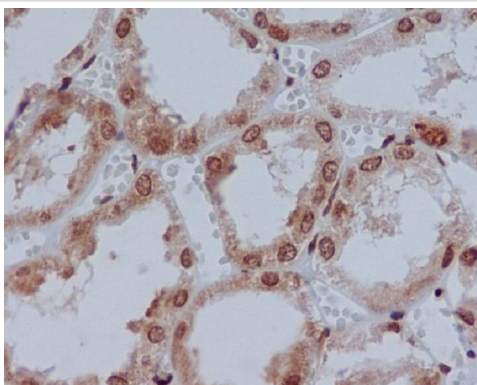
Application Details

WB 1:500~1:2000 IHC 1:50~1:200 ICC/IF 1:50~1:200 IP 1:50

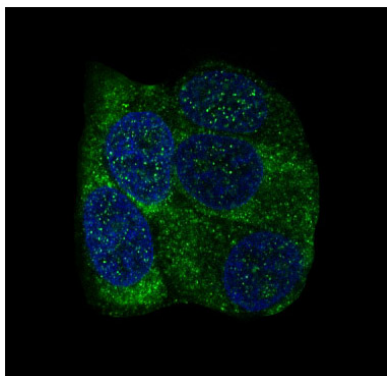
Images



Western blot analysis of YB1 expression in HeLa cell lysate.



Immunohistochemical analysis of paraffin-embedded human kidney, using YB1 Antibody.



Immunofluorescent analysis of MCF-7 cells, using YB1 Antibody.

## Product Description

Mediates pre-mRNA alternative splicing regulation. Binds to splice sites in pre-mRNA and regulates splice site selection. Binds and stabilizes cytoplasmic mRNA. Contributes to the regulation of translation by modulating the interaction between the mRNA and eukaryotic initiation factors (By similarity). Regulates the transcription of numerous genes.

## Background

Mediates pre-mRNA alternative splicing regulation. Binds to splice sites in pre-mRNA and regulates splice site selection. Binds and stabilizes cytoplasmic mRNA. Contributes to the regulation of translation by modulating the interaction between the mRNA and eukaryotic initiation factors (By similarity). Regulates the transcription of numerous genes.

Note: This product is for in vitro research use only