

LAMP2 Rabbit mAb

Catalog No: #58833

Package Size: #58833-1 50ul #58833-2 100ul

Orders: order@signalwayantibody.comSupport: tech@signalwayantibody.com

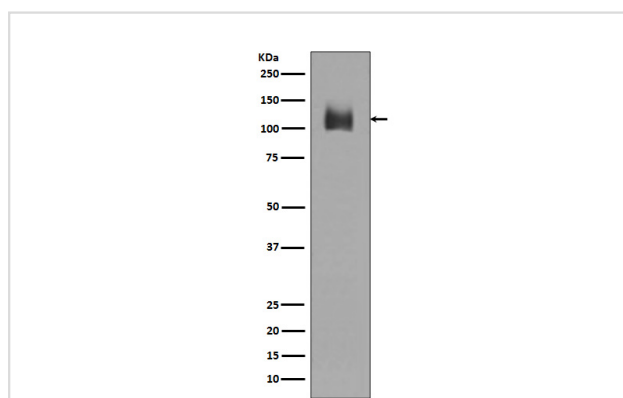
Description

Product Name	LAMP2 Rabbit mAb
Host Species	Rabbit
Clonality	Monoclonal
Isotype	Rabbit IgG
Purification	Affinity-chromatography
Applications	WB IHC IP
Species Reactivity	Human Mouse Rat
Specificity	LAMP2 Antibody detects endogenous levels of total LAMP2
Immunogen Description	A synthesized peptide derived from human LAMP2
Other Names	LAMPB; CD107b; LAMP-2; LGP110;
Accession No.	Uniprot:P13473
Uniprot	P13473
Calculated MW	120kDa
Formulation	Rabbit IgG in phosphate buffered saline , pH 7.4, 150mM NaCl, 0.02% sodium azide and 50% glycerol.
Storage	Store at +4°C short term. Store at -20°C long term. Avoid freeze / thaw cycle.

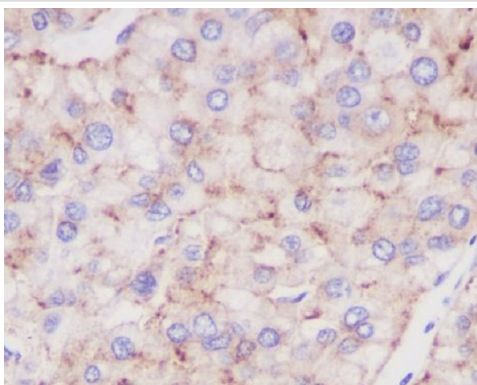
Application Details

WB 1:500~1:2000 IHC 1:50~1:200 IP 1:50

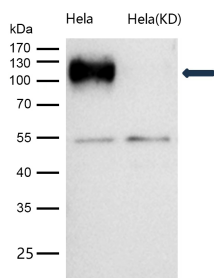
Images



Western blot analysis of LAMP2 expression in JAR cell lysate.



Immunohistochemical analysis of paraffin-embedded human liver cancer, using LAMP2 Antibody.



All lanes use the Antibody at 1:1K dilution for 1 hour at room temperature.

Product Description

Lysosomal-associated membrane protein 2 (LAMP2, synonyms: LAMPB, CD107b) is a member of a family of membrane glycoproteins. This glycoprotein provides selectins with carbohydrate ligands. LAMP2 may plays a role in tumor cell metastasis. It may also functions in the protection, maintenance, and adhesion of the lysosome. Prior to posttranslational modification, Lysosome Associated Membrane Protein 2 (LAMP2) is a ~45 kDa polypeptide.

Background

Lysosomal-associated membrane protein 2 (LAMP2, synonyms: LAMPB, CD107b) is a member of a family of membrane glycoproteins. This glycoprotein provides selectins with carbohydrate ligands. LAMP2 may plays a role in tumor cell metastasis. It may also functions in the protection, maintenance, and adhesion of the lysosome. Prior to posttranslational modification, Lysosome Associated Membrane Protein 2 (LAMP2) is a ~45 kDa polypeptide.

Note: This product is for in vitro research use only