

Alas1 Rabbit mAb

Catalog No: #58840

Package Size: #58840-1 50ul #58840-2 100ul

Orders: order@signalwayantibody.comSupport: tech@signalwayantibody.com

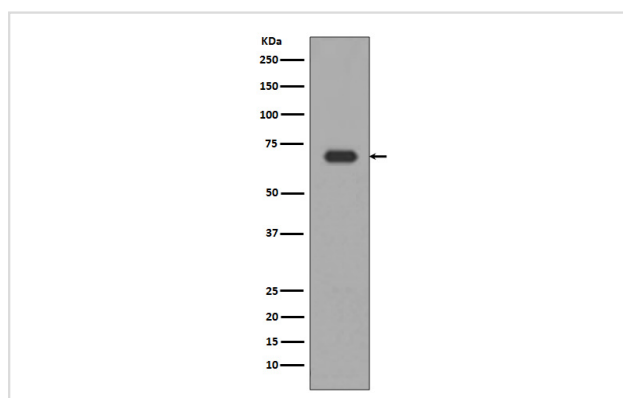
Description

Product Name	Alas1 Rabbit mAb
Host Species	Rabbit
Clonality	Monoclonal
Isotype	Rabbit IgG
Purification	Affinity-chromatography
Applications	WB ICC/IF
Species Reactivity	Human
Specificity	Alas1 Antibody detects endogenous levels of total Alas1
Immunogen Description	A synthesized peptide derived from human Alas1
Other Names	ALAS1; ALAS-H; 5-aminolevulinic acid synthase 1; Delta-ALA synthase 1; ALAS3; ALASH;
Accession No.	Uniprot:P13196
Uniprot	P13196
Calculated MW	71kDa
Formulation	Rabbit IgG in phosphate buffered saline , pH 7.4, 150mM NaCl, 0.02% sodium azide and 50% glycerol.
Storage	Store at +4°C short term. Store at -20°C long term. Avoid freeze / thaw cycle.

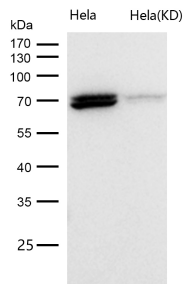
Application Details

WB 1:500~1:2000 ICC/IF 1:50~1:200

Images



Western blot analysis of Alas1 expression in HepG2 cell lysate.



All lanes use the Antibody at 1:1k dilution for 1 hour at room temperature.

Product Description

5-aminolevulinate synthase 1 (ALAS-H) and 2 (ALAS-E) are two isoforms of ALAS, an enzyme catalyzing the first step of the heme biosynthetic pathway in mammals. The erythroid-specific isoenzyme, ALAS-E, regulates the first step of hematopoietic cell differentiation and iron metabolism in the liver. ALAS-H is a housekeeping protein which mediates synthesis of early heme in the mitochondria of most cells.

Background

5-aminolevulinate synthase 1 (ALAS-H) and 2 (ALAS-E) are two isoforms of ALAS, an enzyme catalyzing the first step of the heme biosynthetic pathway in mammals. The erythroid-specific isoenzyme, ALAS-E, regulates the first step of hematopoietic cell differentiation and iron metabolism in the liver. ALAS-H is a housekeeping protein which mediates synthesis of early heme in the mitochondria of most cells.

Note: This product is for in vitro research use only