

CD8 Rabbit mAb

Catalog No: #58853



Package Size: #58853-1 50ul #58853-2 100ul

Orders: order@signalwayantibody.com
Support: tech@signalwayantibody.com

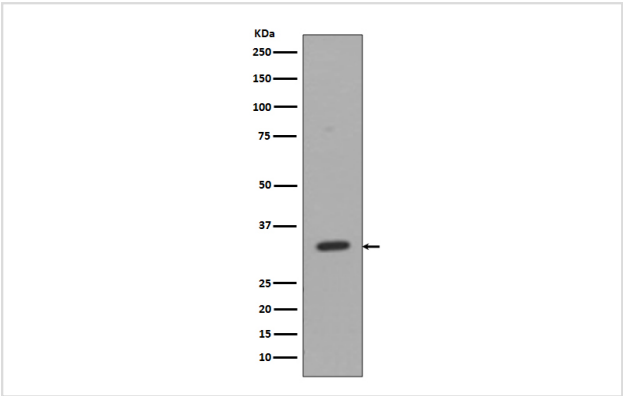
Description

Product Name	CD8 Rabbit mAb
Host Species	Rabbit
Clonality	Monoclonal
Isotype	Rabbit IgG
Purification	Affinity-chromatography
Applications	WB IHC ICC/IF
Species Reactivity	Human
Specificity	CD8 Antibody detects endogenous levels of total CD8
Immunogen Description	A synthesized peptide derived from human CD8
Other Names	CD8;T-cell surface glycoprotein CD8 alpha chain; Leu2; CD8A; MAL; T8 T cell antigen;
Accession No.	Uniprot:P01732
Uniprot	P01732
Formulation	Rabbit IgG in phosphate buffered saline , pH 7.4, 150mM NaCl, 0.02% sodium azide and 50% glycerol.
Storage	Store at +4°C short term. Store at -20°C long term. Avoid freeze / thaw cycle.

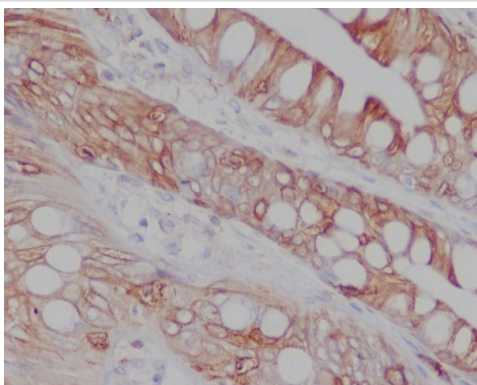
Application Details

WB 1:500~1:2000 IHC 1:50~1:200 ICC/IF 1:50~1:200

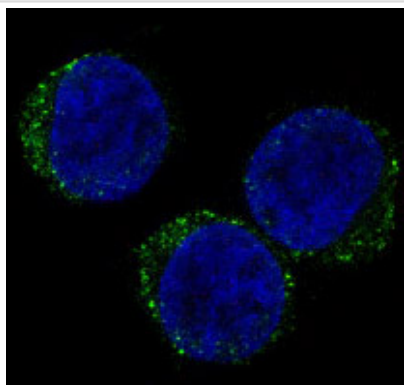
Images



Western blot analysis of CD8 expression in Jurkat cell lysate.



Immunohistochemical analysis of paraffin-embedded human colon, using CD8 Antibody.



Immunofluorescent analysis of Jurkat cells, using CD8 Antibody .

Product Description

Identifies cytotoxic/suppressor T-cells that interact with MHC class I bearing targets. CD8 is thought to play a role in the process of T-cell mediated killing. CD8 alpha chains binds to class I MHC molecules alpha-3 domains.

Background

Identifies cytotoxic/suppressor T-cells that interact with MHC class I bearing targets. CD8 is thought to play a role in the process of T-cell mediated killing. CD8 alpha chains binds to class I MHC molecules alpha-3 domains.

Note: This product is for in vitro research use only