

Lysozyme Rabbit mAb

Catalog No: #58855



Package Size: #58855-1 50ul #58855-2 100ul

Orders: order@signalwayantibody.com
Support: tech@signalwayantibody.com

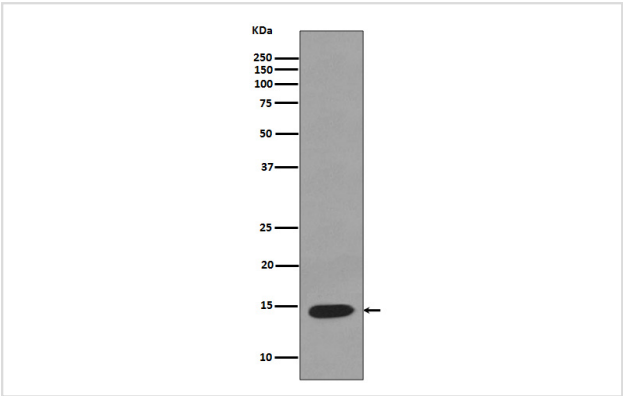
Description

Product Name	Lysozyme Rabbit mAb
Host Species	Rabbit
Clonality	Monoclonal
Isotype	Rabbit IgG
Purification	Affinity-chromatography
Applications	WB IHC ICC/IF IP
Species Reactivity	Human Mouse
Specificity	Lysozyme Antibody detects endogenous levels of total Lysozyme
Immunogen Description	A synthesized peptide derived from human Lysozyme
Other Names	LYZ; LZM; LYSC; EC 3.2.1.17; 4-beta-N-acetylmuramidase C;
Accession No.	Uniprot:P61626
Uniprot	P61626
Formulation	Rabbit IgG in phosphate buffered saline , pH 7.4, 150mM NaCl, 0.02% sodium azide and 50% glycerol.
Storage	Store at +4°C short term. Store at -20°C long term. Avoid freeze / thaw cycle.

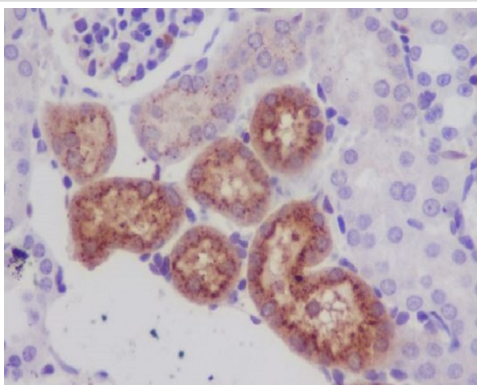
Application Details

WB 1:5000~1:10000 IHC 1:50~1:200 ICC/IF 1:50~1:200 IP 1:20

Images



Western blot analysis of Lysozyme expression in K562 cell lysate;



Immunohistochemical analysis of paraffin-embedded mouse kidney, using Lysozyme Antibody .

Product Description

Lysozymes have primarily a bacteriolytic function; those in tissues and body fluids are associated with the monocyte-macrophage system and enhance the activity of immunoagents.

Background

Lysozymes have primarily a bacteriolytic function; those in tissues and body fluids are associated with the monocyte-macrophage system and enhance the activity of immunoagents.

Note: This product is for in vitro research use only