

HTRA2 Rabbit mAb

Catalog No: #58881

Package Size: #58881-1 50ul #58881-2 100ul

Orders: order@signalwayantibody.com

Support: tech@signalwayantibody.com

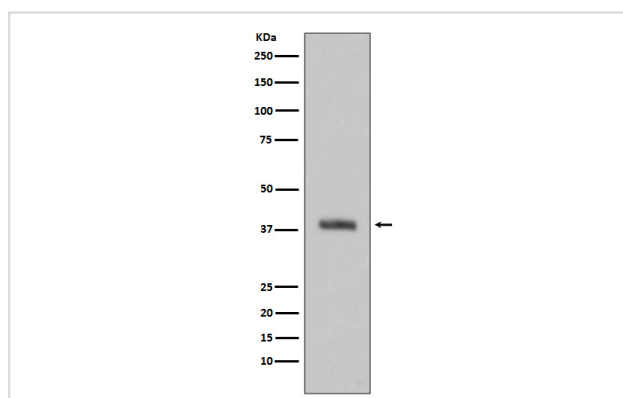
Description

Product Name	HTRA2 Rabbit mAb
Host Species	Rabbit
Clonality	Monoclonal
Isotype	Rabbit IgG
Purification	Affinity-chromatography
Applications	WB IHC IP
Species Reactivity	Human Mouse Rat
Specificity	HTRA2 Antibody detects endogenous levels of HTRA2
Immunogen Description	A synthesized peptide derived from human HTRA2
Other Names	HTRA2; HtrA-like serine protease; OMI; PARK13; Protease; PRSS25; Serine protease 25; HtrA serine peptidase 2; Serine proteinase OMI;
Accession No.	Uniprot:O43464
Uniprot	O43464
Formulation	Rabbit IgG in phosphate buffered saline , pH 7.4, 150mM NaCl, 0.02% sodium azide and 50% glycerol.
Storage	Store at +4°C short term. Store at -20°C long term. Avoid freeze / thaw cycle.

Application Details

WB 1:500~1:2000 IHC 1:50~1:200 IP 1:30

Images



Western blot analysis of HTRA2 expression in Jurkat cell lysate.

Product Description

High temperature requirement protein A2 (HtrA2)/Omi is a serine protease with homology to the E. coli HtrA protein (DegP) and is thought to be involved in apoptosis and stress-induced degradation of misfolded proteins. While HtrA2 was originally identified to be present in either the nucleus or endoplasmic reticulum, subsequent studies have shown that it localizes in mitochondria and is released during apoptosis.

Background

High temperature requirement protein A2 (HtrA2)/Omi is a serine protease with homology to the E. coli HtrA protein (DegP) and is thought to be involved in apoptosis and stress-induced degradation of misfolded proteins. While HtrA2 was originally identified to be present in either the nucleus or endoplasmic reticulum, subsequent studies have shown that it localizes in mitochondria and is released during apoptosis.

Note: This product is for in vitro research use only