

CD11a Rabbit mAb

Catalog No: #58893

Package Size: #58893-1 50ul #58893-2 100ul

Orders: order@signalwayantibody.comSupport: tech@signalwayantibody.com

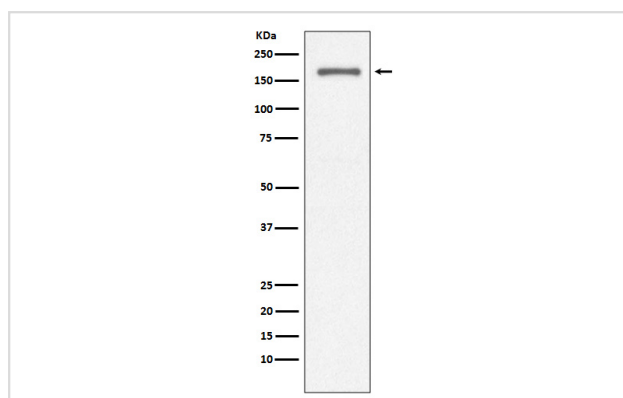
Description

| | |
|-----------------------|--|
| Product Name | CD11a Rabbit mAb |
| Host Species | Rabbit |
| Clonality | Monoclonal |
| Isotype | Rabbit IgG |
| Purification | Affinity-chromatography |
| Applications | WB IHC ICC/IF IP FC |
| Species Reactivity | Human |
| Specificity | CD11a Antibody detects endogenous levels of CD11a |
| Immunogen Description | A synthesized peptide derived from human CD11a |
| Other Names | CD11A; LFA-1; LFA1A; p180; ITGAL; |
| Accession No. | Uniprot:P20701 |
| Uniprot | P20701 |
| Formulation | Rabbit IgG in phosphate buffered saline , pH 7.4, 150mM NaCl, 0.02% sodium azide and 50% glycerol. |
| Storage | Store at +4°C short term. Store at -20°C long term. Avoid freeze / thaw cycle. |

Application Details

WB 1:1000~1:2000 IHC 1:50~1:200 ICC/IF 1:50~1:100 IP 1:50 FC 1:50

Images



Western blot analysis of CD11a expression in Jurkat cell lysate.

Product Description

Integrin alpha-L/beta-2 is a receptor for ICAM1, ICAM2, ICAM3 and ICAM4. It is involved in a variety of immune phenomena including leukocyte-endothelial cell interaction, cytotoxic T-cell mediated killing, and antibody dependent killing by granulocytes and monocytes.

Background

Integrin alpha-L/beta-2 is a receptor for ICAM1, ICAM2, ICAM3 and ICAM4. It is involved in a variety of immune phenomena including leukocyte-endothelial cell interaction, cytotoxic T-cell mediated killing, and antibody dependent killing by granulocytes and monocytes.

Note: This product is for in vitro research use only