

MLANA Rabbit mAb

Catalog No: #58894



Package Size: #58894-1 50ul #58894-2 100ul

Orders: [order@signalwayantibody.com](mailto:order@signalwayantibody.com)  
Support: [tech@signalwayantibody.com](mailto:tech@signalwayantibody.com)

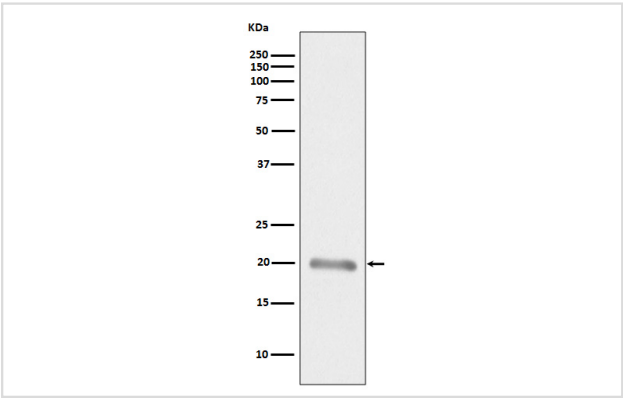
Description

Product Name	MLANA Rabbit mAb
Host Species	Rabbit
Clonality	Monoclonal
Isotype	Rabbit IgG
Purification	Affinity-chromatography
Applications	WB IHC ICC/IF FC
Species Reactivity	Human
Specificity	MLANA Antibody detects endogenous levels of MLANA
Immunogen Description	A synthesized peptide derived from human MLANA
Other Names	Antigen LB39-AA; Antigen SK29-AA; MAR1; MART-1; MART1; melan-A; Melanoma antigen recognized by T-cells 1; MLANA; Protein Melan-A;
Accession No.	Uniprot:Q16655
Uniprot	Q16655
Formulation	Rabbit IgG in phosphate buffered saline , pH 7.4, 150mM NaCl, 0.02% sodium azide and 50% glycerol.
Storage	Store at +4°C short term. Store at -20°C long term. Avoid freeze / thaw cycle.

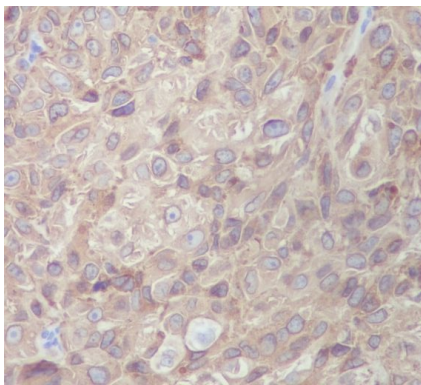
Application Details

WB 1:1000~1:2000 IHC 1:50~1:200 ICC/IF 1:50~1:200 FC 1:200

Images



Western blot analysis of MLANA expression in Human melanoma tissue lysate.



Immunohistochemical analysis of paraffin-embedded human melanoma, using MLANA Antibody.

## Product Description

Involved in melanosome biogenesis by ensuring the stability of GPR143. Plays a vital role in the expression, stability, trafficking, and processing of melanocyte protein PMEL, which is critical to the formation of stage II melanosomes.

## Background

Involved in melanosome biogenesis by ensuring the stability of GPR143. Plays a vital role in the expression, stability, trafficking, and processing of melanocyte protein PMEL, which is critical to the formation of stage II melanosomes.

Note: This product is for in vitro research use only