

PLC gamma 1 Rabbit mAb

Catalog No: #58921

Package Size: #58921-1 50ul #58921-2 100ul

Orders: order@signalwayantibody.com

Support: tech@signalwayantibody.com

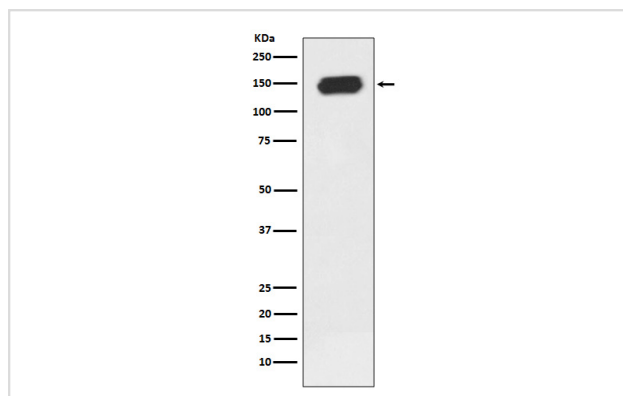
Description

| | |
|-----------------------|--|
| Product Name | PLC gamma 1 Rabbit mAb |
| Host Species | Rabbit |
| Clonality | Monoclonal |
| Isotype | Rabbit IgG |
| Purification | Affinity-chromatography |
| Applications | WB ICC/IF IP |
| Species Reactivity | Human Mouse Rat |
| Specificity | PLC gamma 1 Antibody detects endogenous levels of PLC gamma 1 |
| Immunogen Description | A synthesized peptide derived from human PLC gamma 1 |
| Other Names | PLC-148; PLC-II; PLC-gamma1; PLC1; PLCG-1; Phospholipase C-gamma-1; |
| Accession No. | Uniprot:P19174 |
| Uniprot | P19174 |
| Formulation | Rabbit IgG in phosphate buffered saline , pH 7.4, 150mM NaCl, 0.02% sodium azide and 50% glycerol. |
| Storage | Store at +4°C short term. Store at -20°C long term. Avoid freeze / thaw cycle. |

Application Details

WB 1:1000~1:5000 ICC/IF 1:50~1:200 IP 1:50

Images



Western blot analysis of PLC gamma 1 expression in Jurkat cell lysate.

Product Description

The protein encoded by this gene catalyzes the formation of inositol 1,4,5-trisphosphate and diacylglycerol from phosphatidylinositol 4,5-bisphosphate. This reaction uses calcium as a cofactor and plays an important role in the intracellular transduction of receptor-mediated tyrosine kinase activators. For example, when activated by SRC, the encoded protein causes the Ras guanine nucleotide exchange factor RasGRP1 to translocate to the Golgi, where it activates Ras.

Background

The protein encoded by this gene catalyzes the formation of inositol 1,4,5-trisphosphate and diacylglycerol from phosphatidylinositol 4,5-bisphosphate. This reaction uses calcium as a cofactor and plays an important role in the intracellular transduction of receptor-mediated tyrosine kinase activators. For example, when activated by SRC, the encoded protein causes the Ras guanine nucleotide exchange factor RasGRP1 to translocate to the Golgi, where it activates Ras.

Note: This product is for in vitro research use only