

PKR Rabbit mAb

Catalog No: #58943



Package Size: #58943-1 50ul #58943-2 100ul

Orders: order@signalwayantibody.com
Support: tech@signalwayantibody.com

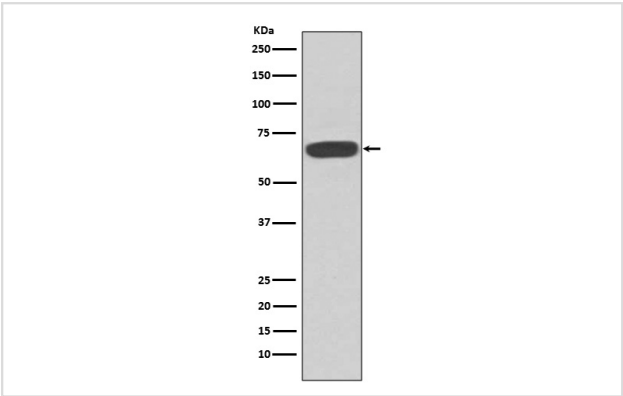
Description

Product Name	PKR Rabbit mAb
Host Species	Rabbit
Clonality	Monoclonal
Isotype	Rabbit IgG
Purification	Affinity-chromatography
Applications	WB IHC ICC/IF IP
Species Reactivity	Human
Specificity	PKR Antibody detects endogenous levels of PKR
Immunogen Description	A synthesized peptide derived from human PKR
Other Names	eIF-2A protein kinase 2; Protein kinase RNA-activated; PKR; p68 kinase; P1/eIF-2A protein kinase;
Accession No.	Uniprot:P19525
Uniprot	P19525
Formulation	Rabbit IgG in phosphate buffered saline , pH 7.4, 150mM NaCl, 0.02% sodium azide and 50% glycerol.
Storage	Store at +4°C short term. Store at -20°C long term. Avoid freeze / thaw cycle.

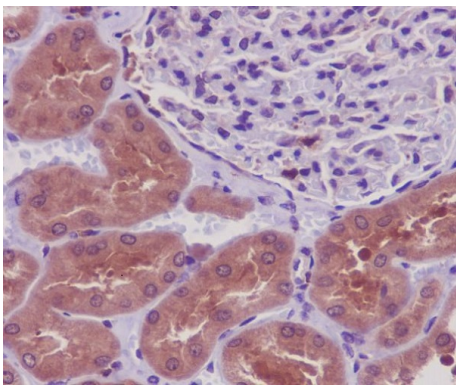
Application Details

WB 1:10000~1:20000 IHC 1:50~1:200 ICC/IF 1:50~1:200 IP 1:50

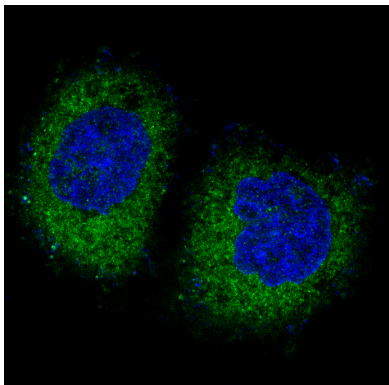
Images



Western blot analysis of PKR expression in MCF-7 cell lysate.



Immunohistochemical analysis of paraffin-embedded human kidney, using PKR Antibody.



Immunofluorescent analysis of Hela cells, using PKR Antibody.

Product Description

PKR a protein kinase of the PEK family. Upon binding double-stranded RNA, it becomes autophosphorylated and activated. Phosphorylates and inhibits the alpha subunit of eIF2 alpha, which leads to an inhibition of the initiation of protein synthesis.

Background

PKR a protein kinase of the PEK family. Upon binding double-stranded RNA, it becomes autophosphorylated and activated. Phosphorylates and inhibits the alpha subunit of eIF2 alpha, which leads to an inhibition of the initiation of protein synthesis.

Note: This product is for in vitro research use only