

P Glycoprotein Rabbit mAb

Catalog No: #58944

Package Size: #58944-1 50ul #58944-2 100ul

Orders: order@signalwayantibody.comSupport: tech@signalwayantibody.com

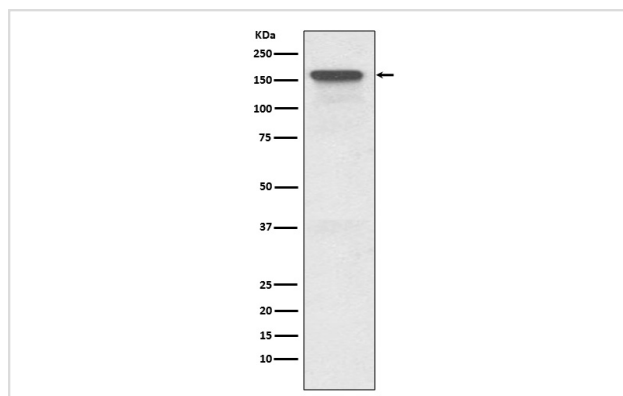
Description

Product Name	P Glycoprotein Rabbit mAb
Host Species	Rabbit
Clonality	Monoclonal
Isotype	Rabbit IgG
Purification	Affinity-chromatography
Applications	WB IHC
Species Reactivity	Human Mouse Rat
Specificity	P Glycoprotein Antibody detects endogenous levels of P Glycoprotein
Immunogen Description	A synthesized peptide derived from human P Glycoprotein
Other Names	CD243; MDR1; MDR3; Multidrug resistance protein 1; P-glycoprotein 1; PGY1;
Accession No.	Uniprot:P08183
Uniprot	P08183
Formulation	Rabbit IgG in phosphate buffered saline , pH 7.4, 150mM NaCl, 0.02% sodium azide and 50% glycerol.
Storage	Store at +4°C short term. Store at -20°C long term. Avoid freeze / thaw cycle.

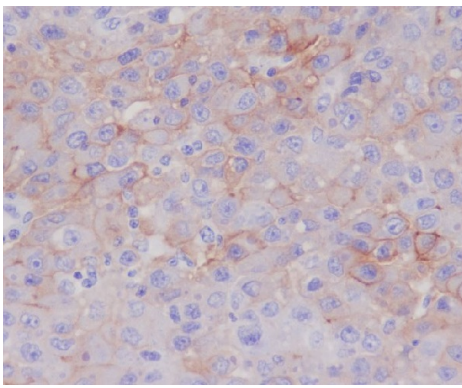
Application Details

WB 1:500~1:2000 IHC 1:50~1:200

Images



Western blot analysis of P Glycoprotein expression in HeLa cell lysate.



Immunohistochemical analysis of paraffin-embedded human liver, using P Glycoprotein Antibody.

Product Description

A chronic, relapsing inflammation of the gastrointestinal tract with a complex etiology. It is subdivided into Crohn disease and ulcerative colitis phenotypes. Crohn disease may affect any part of the gastrointestinal tract from the mouth to the anus, but most frequently it involves the terminal ileum and colon.

Background

A chronic, relapsing inflammation of the gastrointestinal tract with a complex etiology. It is subdivided into Crohn disease and ulcerative colitis phenotypes. Crohn disease may affect any part of the gastrointestinal tract from the mouth to the anus, but most frequently it involves the terminal ileum and colon.

Note: This product is for in vitro research use only