

CD68 Rabbit mAb

Catalog No: #59019

Package Size: #59019-1 50ul #59019-2 100ul

Orders: order@signalwayantibody.com

Support: tech@signalwayantibody.com

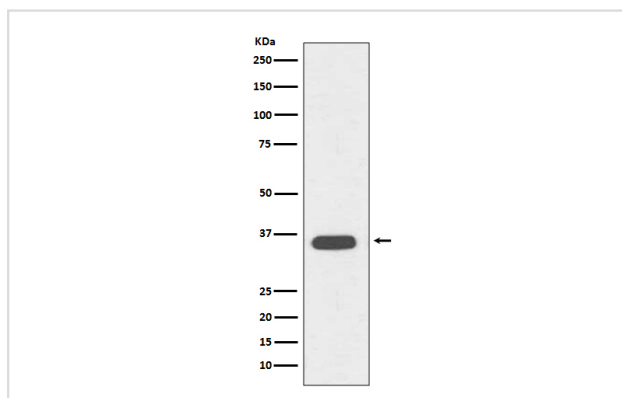
Description

Product Name	CD68 Rabbit mAb
Host Species	Rabbit
Clonality	Monoclonal
Isotype	Rabbit IgG
Purification	Affinity-chromatography
Applications	WB
Species Reactivity	Human Mouse Rat
Specificity	CD68 Antibody detects endogenous levels of CD68
Immunogen Description	A synthesized peptide derived from human CD68
Other Names	CD68 antigen; CD68 molecule; Gp110; LAMP4; Macrophage antigen CD68 (microsialin); Macrosialin; SCARD1; Scavenger receptor class D member 1;
Accession No.	Uniprot:P34810
Uniprot	P34810
Formulation	Rabbit IgG in phosphate buffered saline , pH 7.4, 150mM NaCl, 0.02% sodium azide and 50% glycerol.
Storage	Store at +4°C short term. Store at -20°C long term. Avoid freeze / thaw cycle.

Application Details

WB 1:500~1:1000

Images



Western blot analysis of CD68 expression in Jurkat cell lysate.

Product Description

CD68 belongs to a family of acidic, highly glycosylated lysosomal glycoproteins (LGPs) that includes lamp-1 and lamp-2. Play a role in phagocytic activities of tissue macrophages, both in intracellular lysosomal metabolism and extracellular cell-cell and cell-pathogen interactions.

Background

CD68 belongs to a family of acidic, highly glycosylated lysosomal glycoproteins (LGPs) that includes lamp-1 and lamp-2. Play a role in phagocytic activities of tissue macrophages, both in intracellular lysosomal metabolism and extracellular cell-cell and cell-pathogen interactions.

Note: This product is for in vitro research use only