

SHP2 Rabbit mAb

Catalog No: #59025

Package Size: #59025-1 50ul #59025-2 100ul

Orders: order@signalwayantibody.comSupport: tech@signalwayantibody.com

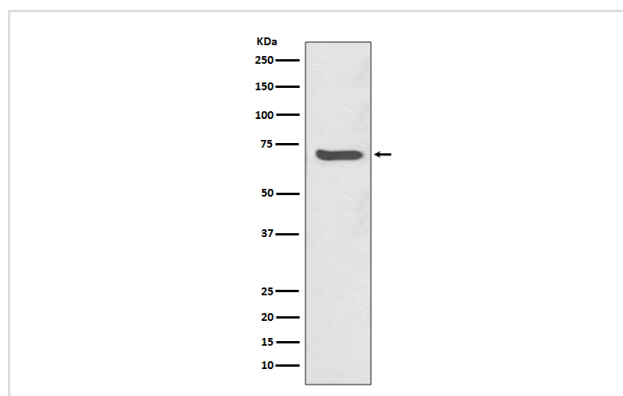
Description

Product Name	SHP2 Rabbit mAb
Host Species	Rabbit
Clonality	Monoclonal
Isotype	Rabbit IgG
Purification	Affinity-chromatography
Applications	WB IHC ICC/IF IP
Species Reactivity	Human
Specificity	SHP2 Antibody detects endogenous levels of SHP2
Immunogen Description	A synthesized peptide derived from human SHP2
Other Names	Tyrosine-protein phosphatase non-receptor type 11; Protein-tyrosine phosphatase 1D; SH-PTP2; PTP2C; PTP-1D; Protein-tyrosine phosphatase 2C; PTP-2C; SHP-2; Shp2; SH-PTP3; PTPN11; SHPTP2;
Accession No.	Uniprot:Q06124
Uniprot	Q06124
Calculated MW	70kDa
Formulation	Rabbit IgG in phosphate buffered saline , pH 7.4, 150mM NaCl, 0.02% sodium azide and 50% glycerol.
Storage	Store at +4°C short term. Store at -20°C long term. Avoid freeze / thaw cycle.

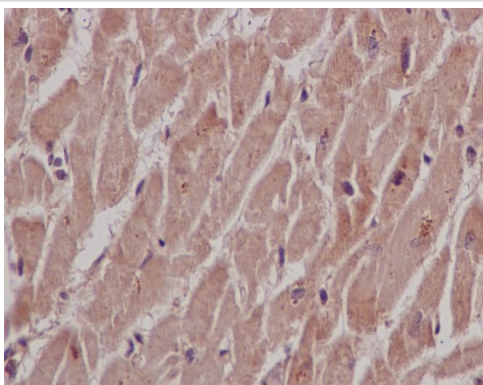
Application Details

WB 1:1000~1:2000 IHC 1:50~1:200 ICC/IF 1:50~1:200 IP 1:50

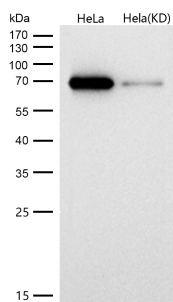
Images



Western blot analysis of SHP2 expression in Jurkat cell lysate.



Immunohistochemical analysis of paraffin-embedded human heart, using SHP2 Antibody.



All lanes use the Antibody at 1:1K dilution for 1 hour at room temperature.

Product Description

Belongs to the protein-tyrosine phosphatase family. Non-receptor class 2 subfamily. It participates in signaling events downstream of receptors for growth factors, cytokines, hormones, antigens, and extracellular matrices in the control of cell growth, differentiation, migration, and death.

Background

Belongs to the protein-tyrosine phosphatase family. Non-receptor class 2 subfamily. It participates in signaling events downstream of receptors for growth factors, cytokines, hormones, antigens, and extracellular matrices in the control of cell growth, differentiation, migration, and death.

Note: This product is for in vitro research use only