

Insulin Receptor Rabbit mAb

Catalog No: #59060



Package Size: #59060-1 50ul #59060-2 100ul

Orders: order@signalwayantibody.com
Support: tech@signalwayantibody.com

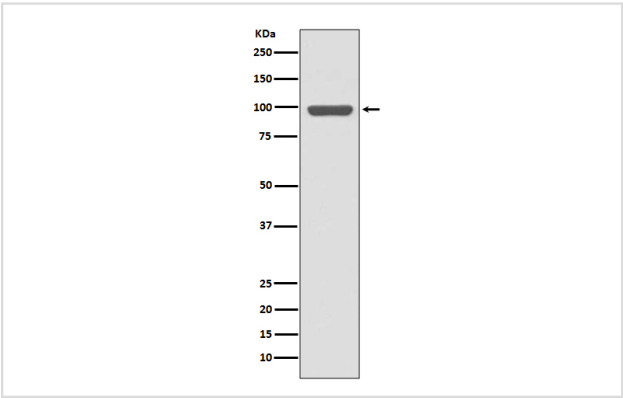
Description

Product Name	Insulin Receptor Rabbit mAb
Host Species	Rabbit
Clonality	Monoclonal
Isotype	Rabbit IgG
Purification	Affinity-chromatography
Applications	WB ICC/IF
Species Reactivity	Human Rat
Specificity	Insulin Receptor Antibody detects endogenous levels of Insulin Receptor
Immunogen Description	A synthesized peptide derived from human Insulin Receptor
Other Names	CD220; HHF5; human insulin receptor; Insr; Insulin receptor subunit beta; IR 1; IR;
Accession No.	Uniprot:P06213
Uniprot	P06213
Calculated MW	95kDa
Formulation	Rabbit IgG in phosphate buffered saline , pH 7.4, 150mM NaCl, 0.02% sodium azide and 50% glycerol.
Storage	Store at +4°C short term. Store at -20°C long term. Avoid freeze / thaw cycle.

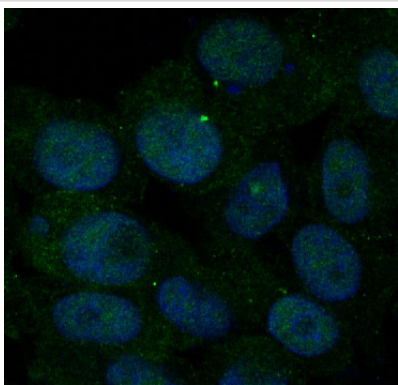
Application Details

WB 1:1000~1:2000 ICC/IF 1:50~1:200

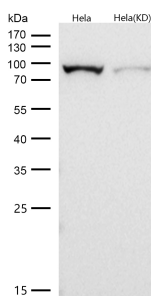
Images



Western blot analysis of Insulin Receptor expression in HeLa cell lysate.



Immunofluorescent analysis of BxPC-3 cells, using Insulin Receptor Antibody.



All lanes use the Antibody at 1:1K dilution for 1 hour at room temperature.

Product Description

Insulin Receptor is a transmembrane receptor tyrosine kinase that is widely expressed in many cell lines and cell types within fetal and postnatal tissues; Insulin binding to IR induces phosphorylation of intracellular tyrosine kinase domains and recruitment of multiple SH2 and SH3 domain-containing intracellular proteins that serve as signaling intermediates for pleiotropic effects of insulin.

Background

Insulin Receptor is a transmembrane receptor tyrosine kinase that is widely expressed in many cell lines and cell types within fetal and postnatal tissues; Insulin binding to IR induces phosphorylation of intracellular tyrosine kinase domains and recruitment of multiple SH2 and SH3 domain-containing intracellular proteins that serve as signaling intermediates for pleiotropic effects of insulin.

Note: This product is for in vitro research use only