

## STAT2 Rabbit mAb

Catalog No: #59110

Package Size: #59110-1 50ul #59110-2 100ul

Orders: order@signalwayantibody.com

Support: tech@signalwayantibody.com

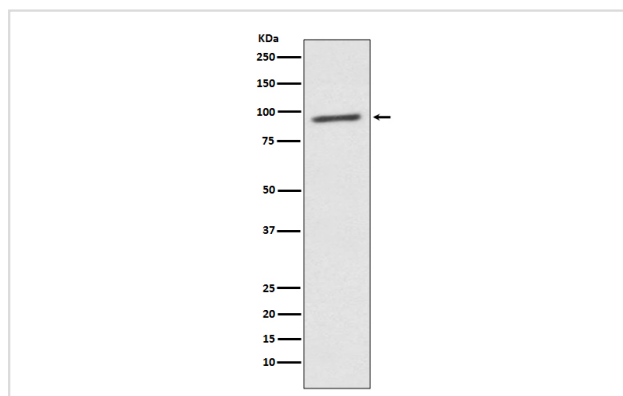
## Description

Product Name	STAT2 Rabbit mAb
Host Species	Rabbit
Clonality	Monoclonal
Isotype	Rabbit IgG
Purification	Affinity-chromatography
Applications	WB IHC ICC/IF
Species Reactivity	Human Mouse Rat
Specificity	STAT2 Antibody detects endogenous levels of STAT2
Immunogen Description	A synthesized peptide derived from human STAT2
Other Names	Homo sapiens interferon alpha induced transcriptional activator; ISGF 3; P113; signal transducer and activator of transcription 2 113kD; STAT113; Stat2;
Accession No.	Uniprot:P52630
Uniprot	P52630
Formulation	Rabbit IgG in phosphate buffered saline , pH 7.4, 150mM NaCl, 0.02% sodium azide and 50% glycerol.
Storage	Store at +4°C short term. Store at -20°C long term. Avoid freeze / thaw cycle.

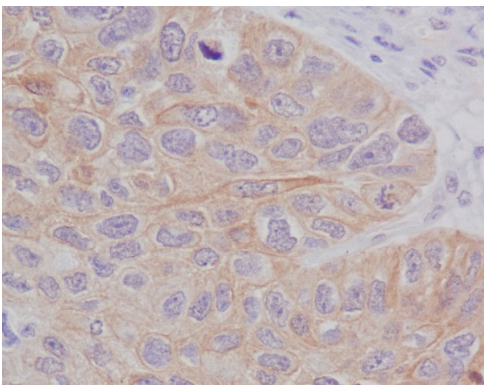
## Application Details

WB 1:1000~1:2000 IHC 1:50~1:200 ICC/IF 1:50~1:200

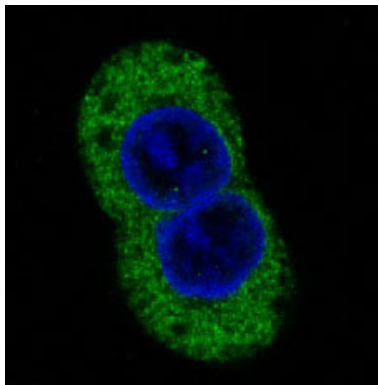
## Images



Western blot analysis of STAT2 expression in K562 cell lysate.



Immunohistochemical analysis of paraffin-embedded human lung cancer, using STAT2 Antibody.



Immunofluorescent analysis of A431 cells, using STAT2 Antibody.

## Product Description

STAT2 (113-kDa), originally purified from the nuclei of alpha-interferon-treated cells, is critical to the transcriptional responses induced by type I interferons, IFN-alpha/beta. Stat2 is rapidly activated by phosphorylation at Tyr690 in response to stimulation by IFN-alpha/beta via associations with receptor-bound Jak kinases

## Background

STAT2 (113-kDa), originally purified from the nuclei of alpha-interferon-treated cells, is critical to the transcriptional responses induced by type I interferons, IFN-alpha/beta. Stat2 is rapidly activated by phosphorylation at Tyr690 in response to stimulation by IFN-alpha/beta via associations with receptor-bound Jak kinases

Note: This product is for in vitro research use only