

Cdc37 Rabbit mAb

Catalog No: #59180

Package Size: #59180-1 50ul #59180-2 100ul

Orders: order@signalwayantibody.comSupport: tech@signalwayantibody.com

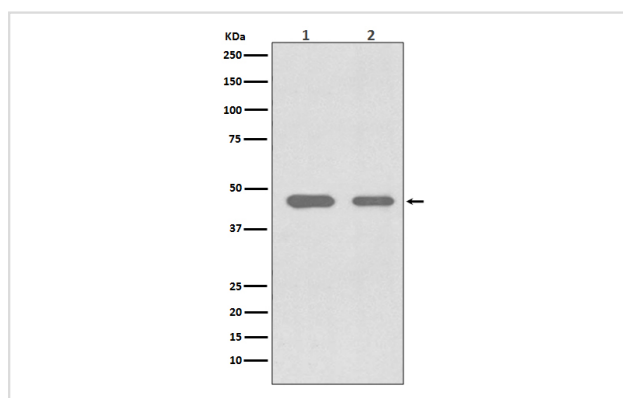
Description

Product Name	Cdc37 Rabbit mAb
Host Species	Rabbit
Clonality	Monoclonal
Isotype	Rabbit IgG
Purification	Affinity-chromatography
Applications	WB IHC IP FC
Species Reactivity	Human Mouse Rat
Specificity	Cdc37 Antibody detects endogenous levels of total Cdc37
Immunogen Description	A synthesized peptide derived from human Cdc37
Other Names	CC37; Hsp90 chaperone protein kinase-targeting subunit; Hsp90 co-chaperone Cdc37; p50Cdc37;
Accession No.	Uniprot:Q16543
Uniprot	Q16543
Calculated MW	50kDa
Formulation	Rabbit IgG in phosphate buffered saline , pH 7.4, 150mM NaCl, 0.02% sodium azide and 50% glycerol.
Storage	Store at +4°C short term. Store at -20°C long term. Avoid freeze / thaw cycle.

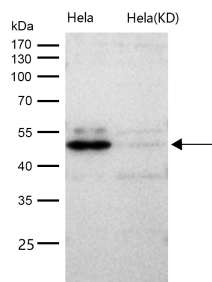
Application Details

WB 1:500~1:2000 IHC 1:50~1:200 IP 1:50 FC 1:50

Images



Western blot analysis of Cdc37 expression in (1) Jurkat cell lysate; (2) SW480 cell lysate.



All lanes use the Antibody at 1:1K dilution for 1 hour at room temperature.

Product Description

CDC37 is an important component of the HSP90 chaperone complex. It was initially identified for its involvement in cell-cycle progression and was later found to have a much broader role as a chaperone for a wide variety of kinases and other proteins. CDC37 protein has an amino-terminal kinase binding domain followed by a central HSP90 binding domain.

Background

CDC37 is an important component of the HSP90 chaperone complex. It was initially identified for its involvement in cell-cycle progression and was later found to have a much broader role as a chaperone for a wide variety of kinases and other proteins. CDC37 protein has an amino-terminal kinase binding domain followed by a central HSP90 binding domain.

Note: This product is for in vitro research use only