

## LC3B Rabbit mAb

Catalog No: #59200

Package Size: #59200-1 50ul #59200-2 100ul

Orders: [order@signalwayantibody.com](mailto:order@signalwayantibody.com)Support: [tech@signalwayantibody.com](mailto:tech@signalwayantibody.com)

## Description

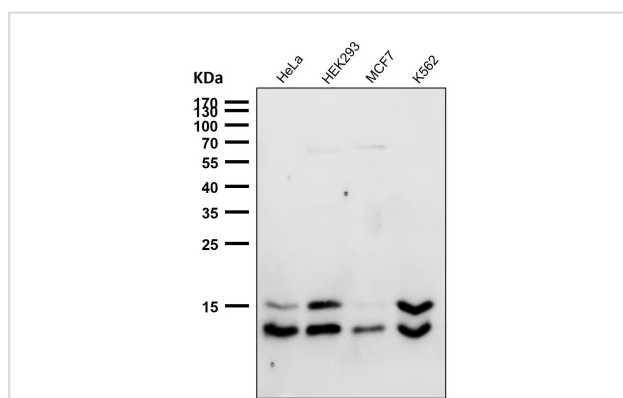
Product Name	LC3B Rabbit mAb
Host Species	Rabbit
Clonality	Monoclonal
Isotype	Rabbit IgG
Purification	Affinity-chromatography
Applications	WB;IHC;ICC/IF;IHF;IP
Species Reactivity	Human Mouse Rat
Specificity	LC3B Antibody detects endogenous levels of total LC3B
Immunogen Description	A synthesized peptide derived from human LC3B
Other Names	ATG8F; LC3B; MAP1LC3B; MLP3B; MAP1LC3B;
Accession No.	Uniprot:Q9GZQ8
Uniprot	Q9GZQ8
Formulation	Rabbit IgG in phosphate buffered saline , pH 7.4, 150mM NaCl, 0.02% sodium azide and 50% glycerol.
Storage	Store at +4°C short term. Store at -20°C long term. Avoid freeze / thaw cycle.

## Application Details

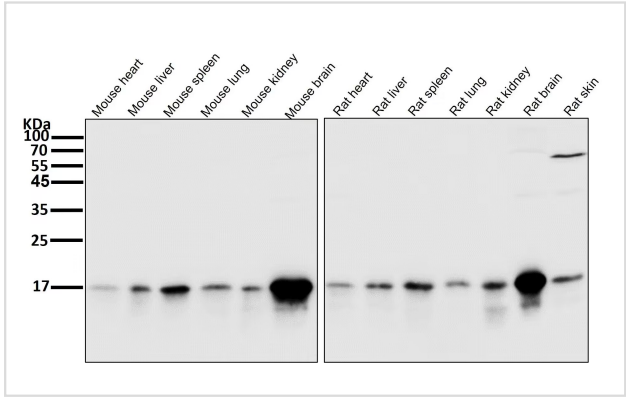
WB 1:1000-1:2000

IHC 1:100-1:200 ICC/IF 1:50-1:200 IP 1:20-1:50

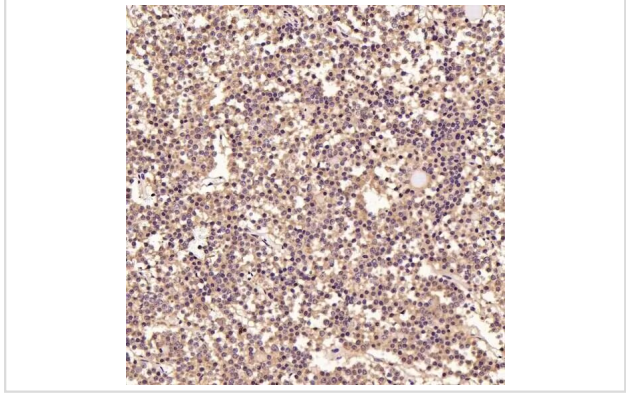
## Images



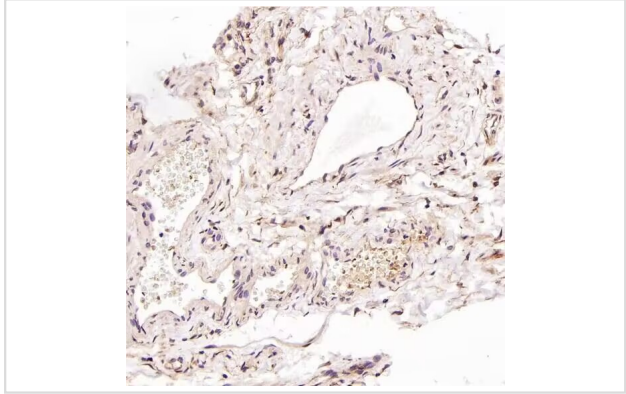
All lanes use the Antibody at 1:1K dilution for 1 hour at room temperature.



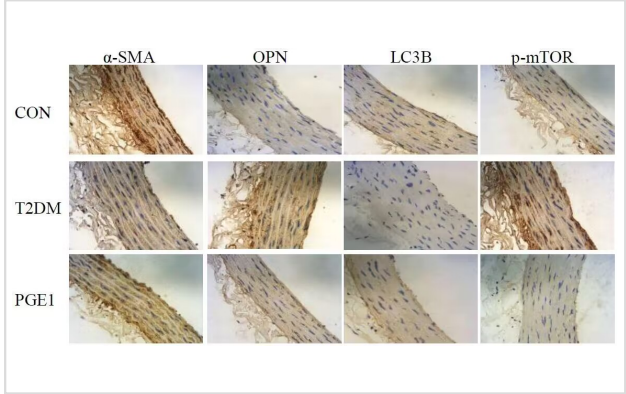
All lanes use the Antibody at 1:3K dilution for 1 hour at room temperature.



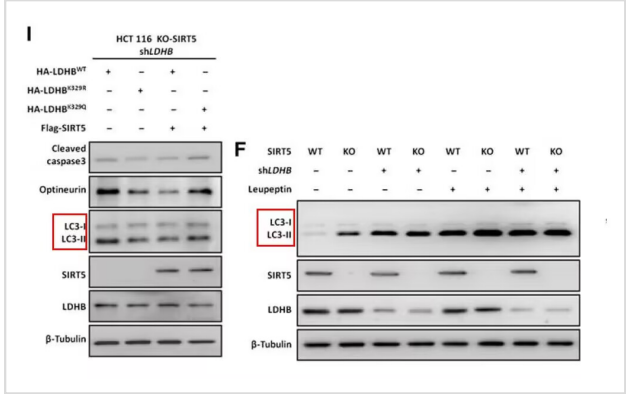
Immunohistochemical analysis of paraffin-embedded Human pituitary tumor, using the Antibody at 1:50 dilution.



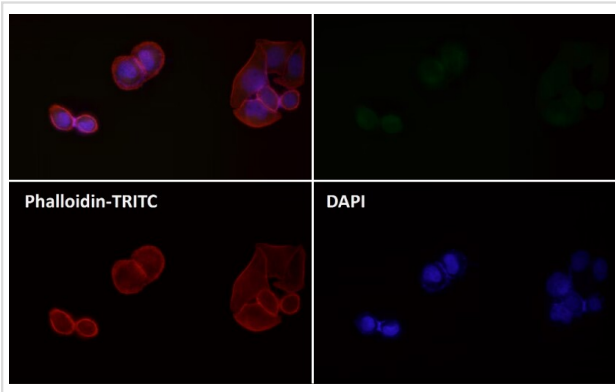
Immunohistochemical analysis of paraffin-embedded Human testis cancer, using the Antibody at 1:200 dilution.



Immunofluorescent analysis of Hela cells treated with choroquine, using LC3B Antibody.



Prostaglandin E1 Inhibited Diabetes-Induced Phenotypic Switching of Vascular Smooth Muscle Cells Through Activating Autophagy. -Cellular Physiology and Biochemistry



Immunofluorescent analysis using the Antibody at 1:150 dilution.

## Product Description

Ubiquitin-like modifier involved in formation of autophagosomal vacuoles (autophagosomes). Plays a role in mitophagy which contributes to regulate mitochondrial quantity and quality by eliminating the mitochondria to a basal level to fulfill cellular energy requirements and preventing excess ROS production.

## Background

Ubiquitin-like modifier involved in formation of autophagosomal vacuoles (autophagosomes). Plays a role in mitophagy which contributes to regulate mitochondrial quantity and quality by eliminating the mitochondria to a basal level to fulfill cellular energy requirements and preventing excess ROS production.

Note: This product is for in vitro research use only