

## EBP50 Rabbit mAb

Catalog No: #59229

Package Size: #59229-1 50ul #59229-2 100ul

Orders: order@signalwayantibody.com

Support: tech@signalwayantibody.com

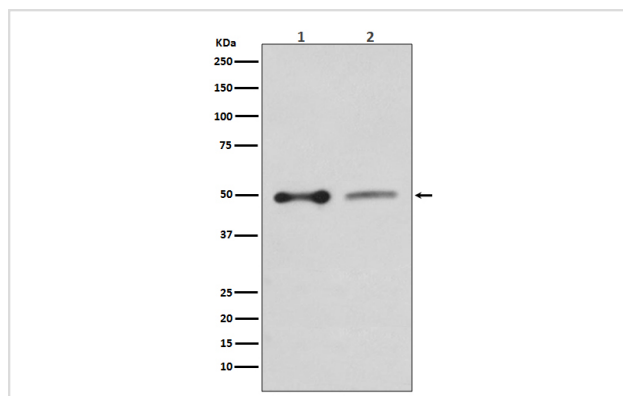
## Description

Product Name	EBP50 Rabbit mAb
Host Species	Rabbit
Clonality	Monoclonal
Isotype	Rabbit IgG
Purification	Affinity-chromatography
Applications	WB IHC
Species Reactivity	Human Rat
Specificity	EBP50 Antibody detects endogenous levels of total EBP50
Immunogen Description	A synthesized peptide derived from human EBP50
Other Names	SLC9A3R1; EBP50; NPHLOP2; NHERF; NHERF-1; NHERF1;
Accession No.	Uniprot:O14745
Uniprot	O14745
Formulation	Rabbit IgG in phosphate buffered saline , pH 7.4, 150mM NaCl, 0.02% sodium azide and 50% glycerol.
Storage	Store at +4°C short term. Store at -20°C long term. Avoid freeze / thaw cycle.

## Application Details

WB 1:500~1:2000 IHC 1:50~1:200

## Images



Western blot analysis of EBP50 expression in (1) HepG2 cell lysate; (2) PC12 cell lysate.

## Product Description

Scaffold protein that connects plasma membrane proteins with members of the ezrin/moesin/radixin family and thereby helps to link them to the actin cytoskeleton and to regulate their surface expression. Necessary for recycling of internalized ADRB2. Was first known to play a role in the regulation of the activity and subcellular location of SLC9A3. Necessary for cAMP-mediated phosphorylation and inhibition of SLC9A3.

## Background

---

Scaffold protein that connects plasma membrane proteins with members of the ezrin/moesin/radixin family and thereby helps to link them to the actin cytoskeleton and to regulate their surface expression. Necessary for recycling of internalized ADRB2. Was first known to play a role in the regulation of the activity and subcellular location of SLC9A3. Necessary for cAMP-mediated phosphorylation and inhibition of SLC9A3.

---

Note: This product is for in vitro research use only