

## Mitofusin1 Rabbit mAb

Catalog No: #59238

Package Size: #59238-1 50ul #59238-2 100ul

Orders: order@signalwayantibody.com

Support: tech@signalwayantibody.com

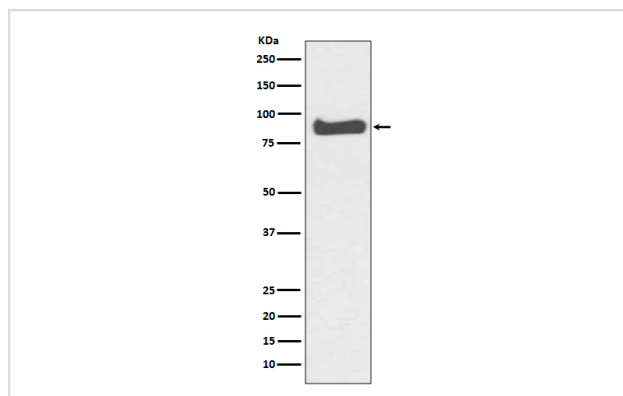
## Description

Product Name	Mitofusin1 Rabbit mAb
Host Species	Rabbit
Clonality	Monoclonal
Isotype	Rabbit IgG
Purification	Affinity-chromatography
Applications	WB IP FC
Species Reactivity	Human
Specificity	Mitofusin1 Antibody detects endogenous levels of total Mitofusin1
Immunogen Description	A synthesized peptide derived from human Mitofusin1
Other Names	MFN1; Fzo homolog; Hfzo2; Mitofusin-1; Hfzo1; Mitofusin1;
Accession No.	Uniprot:Q8IWA4
Uniprot	Q8IWA4
Formulation	Rabbit IgG in phosphate buffered saline , pH 7.4, 150mM NaCl, 0.02% sodium azide and 50% glycerol.
Storage	Store at +4°C short term. Store at -20°C long term. Avoid freeze / thaw cycle.

## Application Details

WB 1:1000~1:5000 IP 1:20 FC 1:20

## Images



Western blot analysis of Mitofusin1 expression in K562 cell lysate.

## Product Description

Mitofusins are mitochondrial transmembrane GTPases that function to regulate mitochondrial fusion, a process that occurs in concert with mitochondrial division and is necessary for the maintenance of structural and genetic mitochondrial integrity. Two mitofusins have been described in mammals, mitofusin-1 and -2, which share 60% amino acid identity and appear to function coordinately to regulate mitochondrial fusion.

## Background

---

Mitofusins are mitochondrial transmembrane GTPases that function to regulate mitochondrial fusion, a process that occurs in concert with mitochondrial division and is necessary for the maintenance of structural and genetic mitochondrial integrity. Two mitofusins have been described in mammals, mitofusin-1 and -2, which share 60% amino acid identity and appear to function coordinately to regulate mitochondrial fusion.

---

Note: This product is for in vitro research use only