

## EFCAB4B Antibody

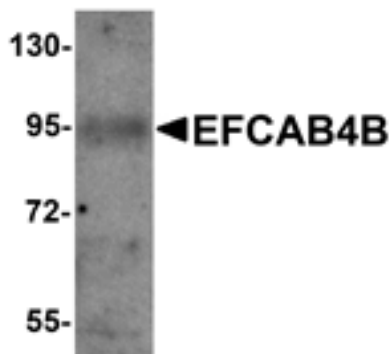
Catalog No: #25215

Orders: [order@signalwayantibody.com](mailto:order@signalwayantibody.com)Support: [tech@signalwayantibody.com](mailto:tech@signalwayantibody.com)

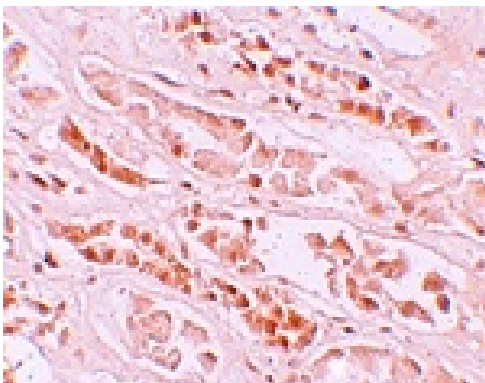
## Description

Product Name	EFCAB4B Antibody
Host Species	Rabbit
Clonality	Polyclonal
Purification	Affinity chromatography purified via peptide column
Applications	ELISA WB IHC
Species Reactivity	Hu Ms
Immunogen Type	Peptide
Immunogen Description	Raised against a 14 amino acid peptide near the carboxy terminus of human EFCAB4B.
Target Name	EFCAB4B
Other Names	EF-hand calcium binding domain 4B, Calcium release-activated calcium channel regulator 2, CRACR2A
Accession No.	Swiss-Prot:Q9BSW2Gene ID:84766
Uniprot	Q9BSW2
GeneID	84766;
Concentration	1mg/ml
Formulation	Supplied in PBS containing 0.02% sodium azide.
Storage	Can be stored at -20°C, stable for one year. As with all antibodies care should be taken to avoid repeated freeze thaw cycles. Antibodies should not be exposed to prolonged high temperatures.

## Images



Western blot analysis of EFCAB4B in mouse kidney tissue lysate with EFCAB4B antibody at 1 ug/mL.



Immunohistochemistry of EFCAB4B in human kidney tissue with EFCAB4B antibody at 10 ug/mL.

## Background

EFCAB4B, also known as Calcium release-activated calcium channel regulator 2A, is a novel  $\text{Ca}^{2+}$ -binding EF-hand protein that is thought to play a key role in store-operated  $\text{Ca}^{2+}$  entry in T-cells by regulating CRAC channel activation. EFCAB4B acts as a cytoplasmic calcium-sensor that forms a complex with ORAI1 and STIM1 at the junctional regions between the plasma membrane and the endoplasmic reticulum upon low  $\text{Ca}^{2+}$  concentration. A closely related protein, EFCAB4A, is likely to play a similar role as EFCAB4B, but the detailed function of EFCAB4A is still under investigation.

Note: This product is for in vitro research use only