

# PKC mu Rabbit mAb

Catalog No: #59534

Package Size: #59534-1 50ul #59534-2 100ul

Orders: [order@signalwayantibody.com](mailto:order@signalwayantibody.com)Support: [tech@signalwayantibody.com](mailto:tech@signalwayantibody.com)

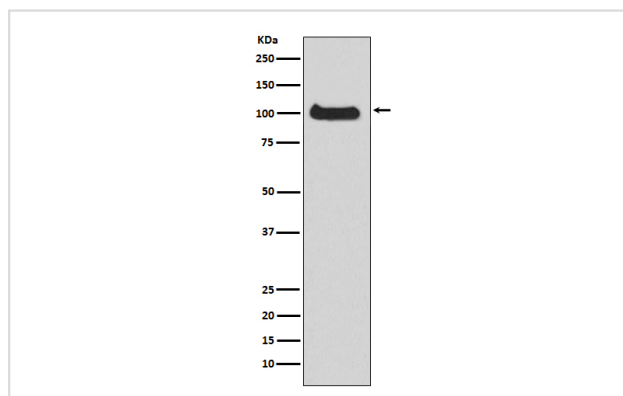
## Description

Product Name	PKC mu Rabbit mAb
Host Species	Rabbit
Clonality	Monoclonal
Isotype	Rabbit IgG
Purification	Affinity-chromatography
Applications	WB
Species Reactivity	Human Mouse Rat
Specificity	PKC mu Antibody detects endogenous levels of total PKC mu
Immunogen Description	A synthesized peptide derived from human PKC mu
Other Names	nPKC D1; nPKC mu; nPKCD1; nPKCmu; PKCM; PKCmu; PKD1; PRKCM; PRKD 1; Prkd1; Protein kinase C mu; Protein kinase C mu type; Serine/threonine protein kinase D1;
Accession No.	Uniprot:Q15139
Uniprot	Q15139
Formulation	Rabbit IgG in phosphate buffered saline , pH 7.4, 150mM NaCl, 0.02% sodium azide and 50% glycerol.
Storage	Store at +4°C short term. Store at -20°C long term. Avoid freeze / thaw cycle.

## Application Details

WB 1:500~1:2000

## Images



Western blot analysis of PKC mu expression in HeLa cell lysate.

## Product Description

Converts transient diacylglycerol (DAG) signals into prolonged physiological effects, downstream of PKC. Involved in resistance to oxidative stress through activation of NF-kappa-B.

## Background

---

Converts transient diacylglycerol (DAG) signals into prolonged physiological effects, downstream of PKC. Involved in resistance to oxidative stress through activation of NF-kappa-B.

---

Note: This product is for in vitro research use only