

BMAL1 Rabbit mAb

Catalog No: #59536

Package Size: #59536-1 50ul #59536-2 100ul

Orders: order@signalwayantibody.comSupport: tech@signalwayantibody.com

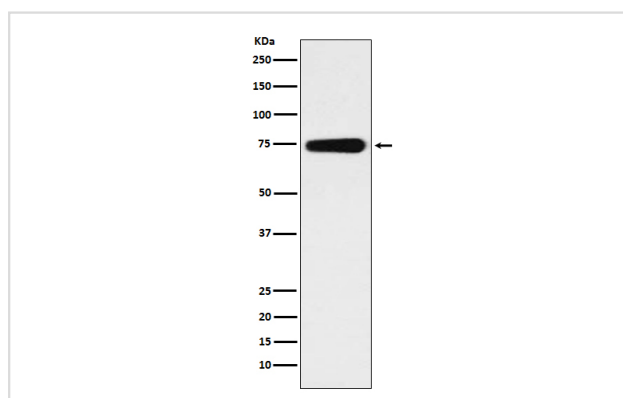
Description

Product Name	BMAL1 Rabbit mAb
Host Species	Rabbit
Clonality	Monoclonal
Isotype	Rabbit IgG
Purification	Affinity-chromatography
Applications	WB
Species Reactivity	Human Mouse Rat
Specificity	BMAL1 Antibody detects endogenous levels of total BMAL1
Immunogen Description	A synthesized peptide derived from human BMAL1
Other Names	bHLHe5; BMAL1c; Brain and muscle ARNT like 1; CG8727 PA; JAP3; Member of PAS protein 3; MOP3; PASD3; TIC;
Accession No.	Uniprot:O00327
Uniprot	O00327
Formulation	Rabbit IgG in phosphate buffered saline , pH 7.4, 150mM NaCl, 0.02% sodium azide and 50% glycerol.
Storage	Store at +4°C short term. Store at -20°C long term. Avoid freeze / thaw cycle.

Application Details

WB 1:500~1:2000

Images



Western blot analysis of BMAL1 expression in human fetal heart lysate.

Product Description

The cellular circadian clockwork consists of interwoven positive and negative regulatory loops, or limbs (1,2). The positive limb includes the CLOCK and BMAL1 proteins, two basic helix-loop-helix-PAS containing transcription factors that bind E box enhancer elements and activate transcription of their target genes.

Background

The cellular circadian clockwork consists of interwoven positive and negative regulatory loops, or limbs (1,2). The positive limb includes the CLOCK and BMAL1 proteins, two basic helix-loop-helix-PAS containing transcription factors that bind E box enhancer elements and activate transcription of their target genes.

Note: This product is for in vitro research use only