

## Insulin Receptor R Rabbit mAb

Catalog No: #59570

Package Size: #59570-1 50ul #59570-2 100ul

Orders: [order@signalwayantibody.com](mailto:order@signalwayantibody.com)Support: [tech@signalwayantibody.com](mailto:tech@signalwayantibody.com)

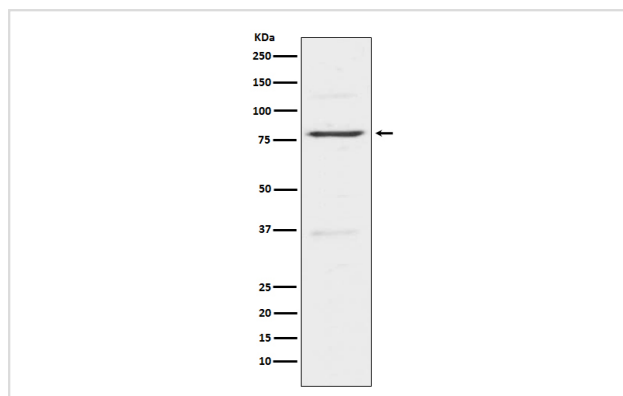
## Description

Product Name	Insulin Receptor R Rabbit mAb
Host Species	Rabbit
Clonality	Monoclonal
Isotype	Rabbit IgG
Purification	Affinity-chromatography
Applications	WB IHC
Species Reactivity	Human Mouse Rat
Specificity	Insulin Receptor R Antibody detects endogenous levels of total Insulin Receptor R
Immunogen Description	A synthesized peptide derived from human Insulin Receptor R
Other Names	INSRR; Insulin receptor related receptor precursor; IR related receptor; IRR; Sirr;
Accession No.	Uniprot:P14616
Uniprot	P14616
Formulation	Rabbit IgG in phosphate buffered saline , pH 7.4, 150mM NaCl, 0.02% sodium azide and 50% glycerol.
Storage	Store at +4°C short term. Store at -20°C long term. Avoid freeze / thaw cycle.

## Application Details

WB 1:500~1:2000 IHC 1:50~1:200

## Images



Western blot analysis of Insulin Receptor R expression in HeLa cell lysate.

## Product Description

This receptor probably binds an insulin related protein and has a tyrosine-protein kinase activity. It phosphorylates the insulin receptor substrates IRS-1 and IRS-2.

## Background

---

This receptor probably binds an insulin related protein and has a tyrosine-protein kinase activity. It phosphorylates the insulin receptor substrates IRS-1 and IRS-2.

---

Note: This product is for in vitro research use only