

Hemopexin Rabbit mAb

Catalog No: #59575

Package Size: #59575-1 50ul #59575-2 100ul

Orders: order@signalwayantibody.com

Support: tech@signalwayantibody.com

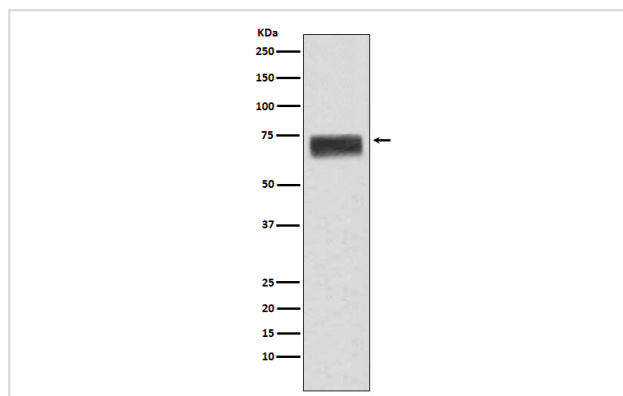
Description

Product Name	Hemopexin Rabbit mAb
Host Species	Rabbit
Clonality	Monoclonal
Isotype	Rabbit IgG
Purification	Affinity-chromatography
Applications	WB IHC ICC/IF IP
Species Reactivity	Human
Specificity	Hemopexin Antibody detects endogenous levels of total Hemopexin
Immunogen Description	A synthesized peptide derived from human Hemopexin
Other Names	Beta 1B glycoprotein; HEMO; Hemopexin; Hpx;
Accession No.	Uniprot:P02790
Uniprot	P02790
Formulation	Rabbit IgG in phosphate buffered saline , pH 7.4, 150mM NaCl, 0.02% sodium azide and 50% glycerol.
Storage	Store at +4°C short term. Store at -20°C long term. Avoid freeze / thaw cycle.

Application Details

WB 1:1000~1:5000 IHC 1:50~1:200 ICC/IF 1:50~1:200 IP 1:50

Images



Western blot analysis of Hemopexin expression in human fetal liver lysate.

Product Description

Binds heme and transports it to the liver for breakdown and iron recovery, after which the free hemopexin returns to the circulation.

Background

Binds heme and transports it to the liver for breakdown and iron recovery, after which the free hemopexin returns to the circulation.

Note: This product is for in vitro research use only