

## SKP2 Rabbit mAb

Catalog No: #59586

Package Size: #59586-1 50ul #59586-2 100ul

Orders: order@signalwayantibody.com

Support: tech@signalwayantibody.com

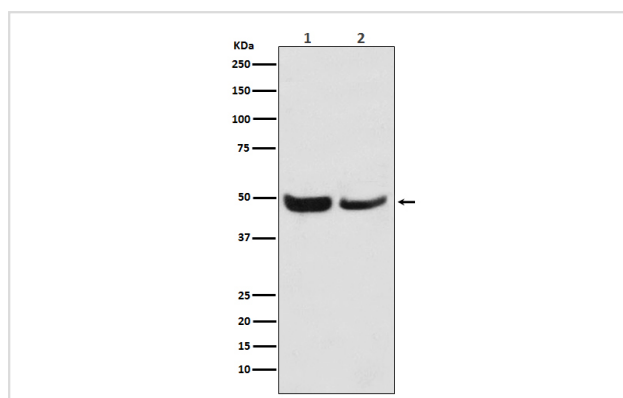
## Description

Product Name	SKP2 Rabbit mAb
Host Species	Rabbit
Clonality	Monoclonal
Isotype	Rabbit IgG
Purification	Affinity-chromatography
Applications	WB IHC ICC/IF FC
Species Reactivity	Human Mouse Rat
Specificity	SKP2 Antibody detects endogenous levels of total SKP2
Immunogen Description	A synthesized peptide derived from human SKP2
Other Names	FBL1; FLB1; FBXL1; MGC1366; SKP2;
Accession No.	Uniprot:Q13309
Uniprot	Q13309
Formulation	Rabbit IgG in phosphate buffered saline , pH 7.4, 150mM NaCl, 0.02% sodium azide and 50% glycerol.
Storage	Store at +4°C short term. Store at -20°C long term. Avoid freeze / thaw cycle.

## Application Details

WB 1:500~1:2000 IHC 1:50~1:200 ICC/IF 1:50~1:200 FC 1:50

## Images



Western blot analysis of SKP2 expression in (1) Jurkat cell lysate; (2) NIH/3T3 cell lysate.

## Product Description

Substrate recognition component of a SCF (SKP1-CUL1-F-box protein) E3 ubiquitin-protein ligase complex which mediates the ubiquitination and subsequent proteasomal degradation of target proteins involved in cell cycle progression, signal transduction and transcription.

## Background

---

Substrate recognition component of a SCF (SKP1-CUL1-F-box protein) E3 ubiquitin-protein ligase complex which mediates the ubiquitination and subsequent proteasomal degradation of target proteins involved in cell cycle progression, signal transduction and transcription.

---

Note: This product is for in vitro research use only