

LMBRD1 Antibody

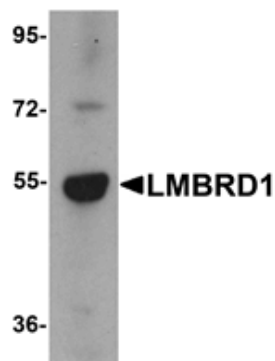
Catalog No: #25216

Orders: order@signalwayantibody.comSupport: tech@signalwayantibody.com

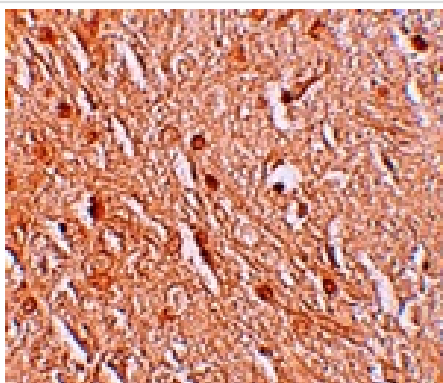
Description

Product Name	LMBRD1 Antibody
Host Species	Rabbit
Clonality	Polyclonal
Purification	Affinity chromatography purified via peptide column
Applications	ELISA WB IHC
Species Reactivity	Hu Ms Rt
Immunogen Type	Peptide
Immunogen Description	Raised against an 18 amino acid peptide near the carboxy terminus of human LMBRD1.
Target Name	LMBRD1
Other Names	LMBR domain containing 1, LMBD1, nuclear export-signal interacting protein, NESI
Accession No.	Swiss-Prot:Q9NUN5Gene ID:55788
Uniprot	Q9NUN5
GeneID	55788;
Concentration	1mg/ml
Formulation	Supplied in PBS containing 0.02% sodium azide.
Storage	Can be stored at -20°C, stable for one year. As with all antibodies care should be taken to avoid repeated freeze thaw cycles. Antibodies should not be exposed to prolonged high temperatures.

Images



Western blot analysis of LMBRD1 in human brain tissue lysate with LMBRD1 antibody at 1 ug/mL.



Immunohistochemistry of LMBRD1 in human brain tissue with LMBRD1 antibody at 2.5 ug/mL.

Background

LMBRD1, also known as NESI (nuclear export signal-interacting protein), is a lysosomal membrane protein that is thought to be involved in the transport and metabolism of cobalamin. LMBRD1 was initially identified as interacting with the large form of the hepatitis delta antigen and may be required for the nucleocytoplasmic shuttling of the hepatitis delta virus. Mutations in this gene are associated with the vitamin B12 metabolism disorder termed, homocystinuria-megaloblastic anemia complementation type F (cblF).

Note: This product is for in vitro research use only