

Exportin2 Rabbit mAb

Catalog No: #59670

Package Size: #59670-1 50ul #59670-2 100ul

Orders: order@signalwayantibody.com

Support: tech@signalwayantibody.com

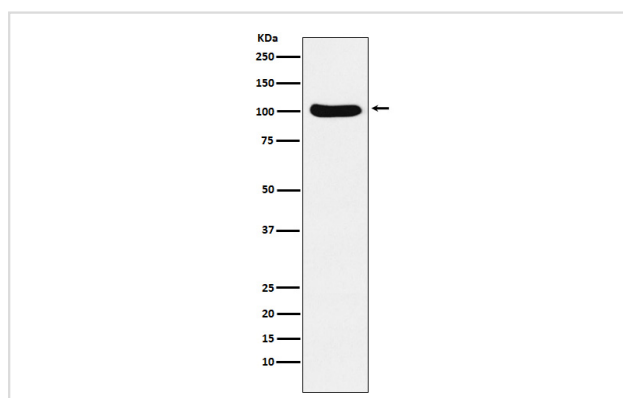
Description

Product Name	Exportin2 Rabbit mAb
Host Species	Rabbit
Clonality	Monoclonal
Isotype	Rabbit IgG
Purification	Affinity-chromatography
Applications	WB IHC ICC/IF FC
Species Reactivity	Human Mouse
Specificity	Exportin2 Antibody detects endogenous levels of total Exportin2
Immunogen Description	A synthesized peptide derived from human Exportin2
Other Names	CSE1L; CAS; CSE1; Exp2; Importin-alpha re-exporter; Exportin-2; XPO2;
Accession No.	Uniprot:P55060
Uniprot	P55060
Calculated MW	98kDa
Formulation	Rabbit IgG in phosphate buffered saline , pH 7.4, 150mM NaCl, 0.02% sodium azide and 50% glycerol.
Storage	Store at +4°C short term. Store at -20°C long term. Avoid freeze / thaw cycle.

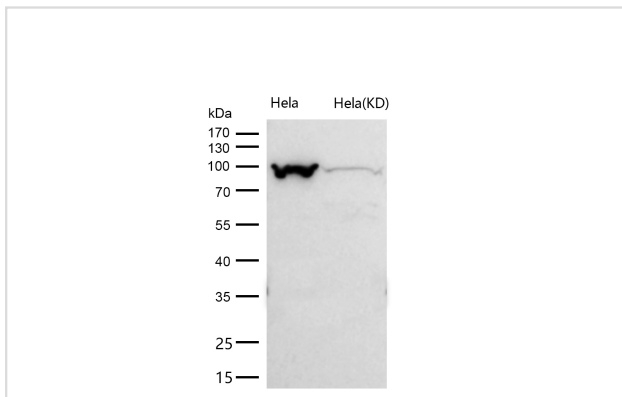
Application Details

WB 1:500~1:2000 IHC 1:50~1:200 ICC/IF 1:50~1:200 FC 1:50

Images



Western blot analysis of Cellular Apoptosis Susceptibility expression in Ramos cell lysate.



All lanes use the Antibody at 1:1K dilution for 1 hour at room temperature.

Product Description

Export receptor for importin-alpha. Mediates importin-alpha re-export from the nucleus to the cytoplasm after import substrates (cargos) have been released into the nucleoplasm. In the nucleus binds cooperatively to importin-alpha and to the GTPase Ran in its active GTP-bound form.

Background

Export receptor for importin-alpha. Mediates importin-alpha re-export from the nucleus to the cytoplasm after import substrates (cargos) have been released into the nucleoplasm. In the nucleus binds cooperatively to importin-alpha and to the GTPase Ran in its active GTP-bound form.

Note: This product is for in vitro research use only