

TRIB3 Rabbit mAb

Catalog No: #59788

Package Size: #59788-1 50ul #59788-2 100ul

Orders: order@signalwayantibody.comSupport: tech@signalwayantibody.com

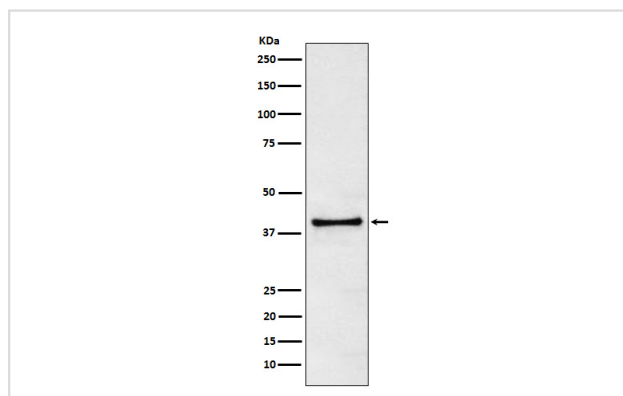
Description

Product Name	TRIB3 Rabbit mAb
Host Species	Rabbit
Clonality	Monoclonal
Isotype	Rabbit IgG
Purification	Affinity-chromatography
Applications	WB IP
Species Reactivity	Human
Specificity	TRIB3 Antibody detects endogenous levels of total TRIB3
Immunogen Description	A synthesized peptide derived from human TRIB3
Other Names	NIPK; SINK; SKIP3; TRB3; Trib3; Tribbles3;
Accession No.	Uniprot:Q96RU7
Uniprot	Q96RU7
Calculated MW	40kDa
Formulation	Rabbit IgG in phosphate buffered saline , pH 7.4, 150mM NaCl, 0.02% sodium azide and 50% glycerol.
Storage	Store at +4°C short term. Store at -20°C long term. Avoid freeze / thaw cycle.

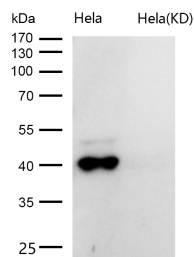
Application Details

WB 1:1000~1:5000 IP 1:20

Images



Western blot analysis of TRIB3 expression in 293T cell lysate.



All lanes use the Antibody at 1:2K dilution for 1 hour at room temperature.

Product Description

Disrupts insulin signaling by binding directly to Akt kinases and blocking their activation. May bind directly to and mask the 'Thr-308' phosphorylation site in AKT1. Binds to ATF4 and inhibits its transcriptional activation activity. Interacts with the NF-kappa-B transactivator p65 RELA and inhibits its phosphorylation and thus its transcriptional activation activity.

Background

Disrupts insulin signaling by binding directly to Akt kinases and blocking their activation. May bind directly to and mask the 'Thr-308' phosphorylation site in AKT1. Binds to ATF4 and inhibits its transcriptional activation activity. Interacts with the NF-kappa-B transactivator p65 RELA and inhibits its phosphorylation and thus its transcriptional activation activity.

Note: This product is for in vitro research use only