

PIST Rabbit mAb

Catalog No: #59811

Package Size: #59811-1 50ul #59811-2 100ul

Orders: order@signalwayantibody.comSupport: tech@signalwayantibody.com

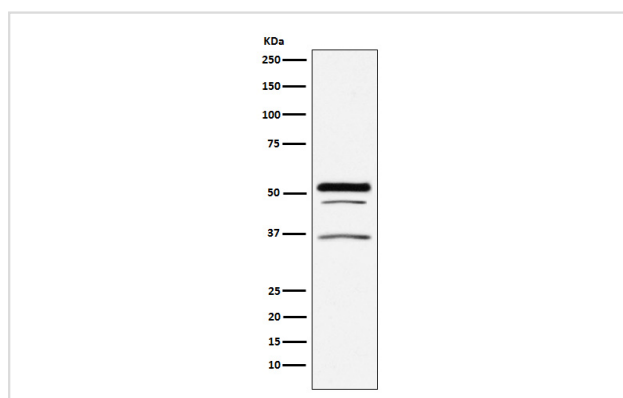
Description

Product Name	PIST Rabbit mAb
Host Species	Rabbit
Clonality	Monoclonal
Isotype	Rabbit IgG
Purification	Affinity-chromatography
Applications	WB IHC ICC/IF IP FC
Species Reactivity	Human Mouse
Specificity	PIST Antibody detects endogenous levels of total PIST
Immunogen Description	A synthesized peptide derived from human PIST
Other Names	GOPC; CAL; CFTR-associated ligand; GOPC1; FIG; PIST;
Accession No.	Uniprot:Q9HD26
Uniprot	Q9HD26
Calculated MW	51kDa
Formulation	Rabbit IgG in phosphate buffered saline , pH 7.4, 150mM NaCl, 0.02% sodium azide and 50% glycerol.
Storage	Store at +4°C short term. Store at -20°C long term. Avoid freeze / thaw cycle.

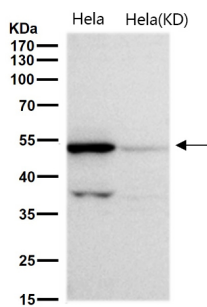
Application Details

WB 1:500~1:2000 IHC 1:50~1:200 ICC/IF 1:50~1:200 IP 1:50 FC 1:50

Images



Western blot analysis of PIST expression in A375 cell lysate.



All lanes use the Antibody at 1:1K dilution for 1 hour at room temperature.

Product Description

Plays a role in intracellular protein trafficking and degradation. May regulate CFTR chloride currents and acid-induced ACCN3 currents by modulating cell surface expression of both channels.

Background

Plays a role in intracellular protein trafficking and degradation. May regulate CFTR chloride currents and acid-induced ACCN3 currents by modulating cell surface expression of both channels.

Note: This product is for in vitro research use only