

## GLO1 Rabbit mAb

Catalog No: #59906

Package Size: #59906-1 50ul #59906-2 100ul

Orders: [order@signalwayantibody.com](mailto:order@signalwayantibody.com)Support: [tech@signalwayantibody.com](mailto:tech@signalwayantibody.com)

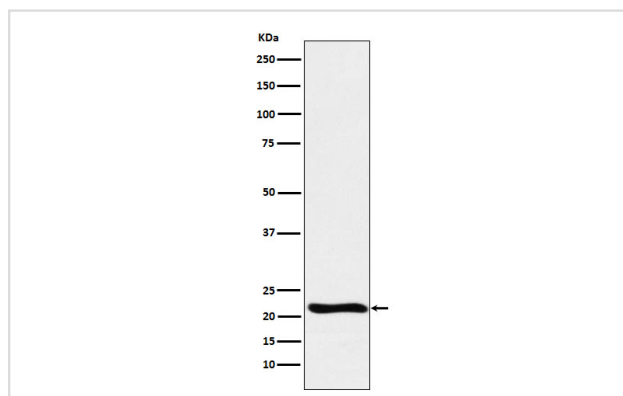
## Description

Product Name	GLO1 Rabbit mAb
Host Species	Rabbit
Clonality	Monoclonal
Isotype	Rabbit IgG
Purification	Affinity-chromatography
Applications	WB FC
Species Reactivity	Human Mouse Rat
Specificity	GLO1 Antibody detects endogenous levels of total GLO1
Immunogen Description	A synthesized peptide derived from human GLO1
Other Names	Aldoketomutase; glo1; GLOD1; Glx I; GLYI;
Accession No.	Uniprot:Q04760
Uniprot	Q04760
Calculated MW	21kDa
Formulation	Rabbit IgG in phosphate buffered saline , pH 7.4, 150mM NaCl, 0.02% sodium azide and 50% glycerol.
Storage	Store at +4°C short term. Store at -20°C long term. Avoid freeze / thaw cycle.

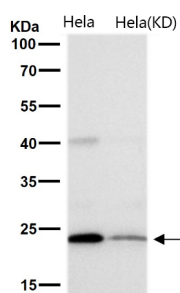
## Application Details

WB 1:500~1:2000 FC 1:50

## Images



Western blot analysis of GLO1 expression in Raji cell lysate.



All lanes use the Antibody at 1:2K dilution for 1 hour at room temperature.

## Product Description

Catalyzes the conversion of hemimercaptal, formed from methylglyoxal and glutathione, to S-lactoylglutathione.

## Background

Catalyzes the conversion of hemimercaptal, formed from methylglyoxal and glutathione, to S-lactoylglutathione.

**Note:** This product is for in vitro research use only