

CD35 Rabbit mAb

Catalog No: #60034

Package Size: #60034-1 50ul #60034-2 100ul

Orders: order@signalwayantibody.comSupport: tech@signalwayantibody.com

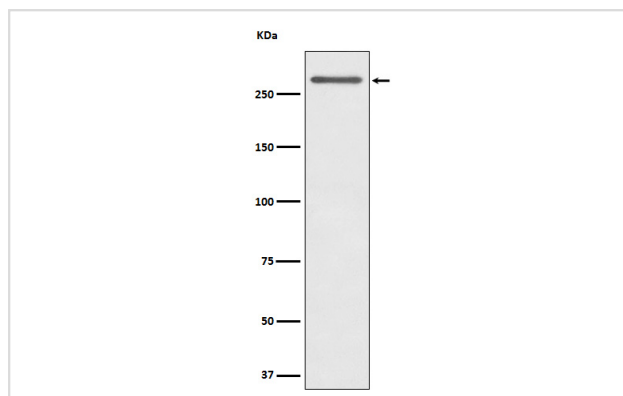
Description

| | |
|-----------------------|--|
| Product Name | CD35 Rabbit mAb |
| Host Species | Rabbit |
| Clonality | Monoclonal |
| Isotype | Rabbit IgG |
| Purification | Affinity-chromatography |
| Applications | WB IHC |
| Species Reactivity | Human |
| Specificity | CD35 Antibody detects endogenous levels of total CD35 |
| Immunogen Description | A synthesized peptide derived from human CD35 |
| Other Names | C3BR; C4BR CD35; CR1; Knops blood group antigen; |
| Accession No. | Uniprot:P17927 |
| Uniprot | P17927 |
| Formulation | Rabbit IgG in phosphate buffered saline , pH 7.4, 150mM NaCl, 0.02% sodium azide and 50% glycerol. |
| Storage | Store at +4°C short term. Store at -20°C long term. Avoid freeze / thaw cycle. |

Application Details

WB 1:500~1:2000 IHC 1:50~1:200

Images



Western blot analysis of CD35 expression in Human tonsil cell lysate.

Product Description

Mediates cellular binding of particles and immune complexes that have activated complement.

Background

Mediates cellular binding of particles and immune complexes that have activated complement.

Note: This product is for in vitro research use only