

## CTR1/SLC31A1 Rabbit mAb

Catalog No: #60069

Package Size: #60069-1 50ul #60069-2 100ul

Orders: [order@signalwayantibody.com](mailto:order@signalwayantibody.com)Support: [tech@signalwayantibody.com](mailto:tech@signalwayantibody.com)

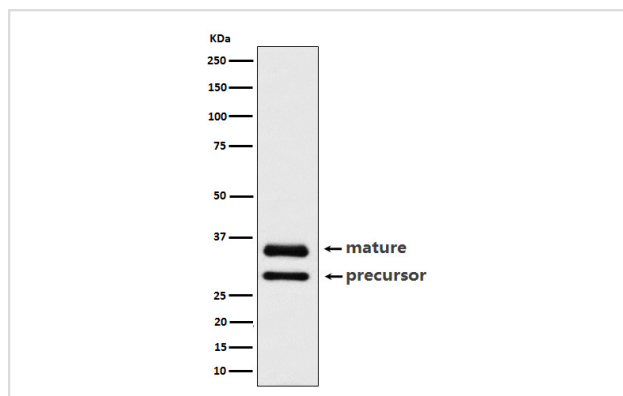
## Description

Product Name	CTR1/SLC31A1 Rabbit mAb
Host Species	Rabbit
Clonality	Monoclonal
Isotype	Rabbit IgG
Purification	Affinity-chromatography
Applications	WB
Species Reactivity	Human Mouse Rat
Specificity	CTR1/SLC31A1 Antibody detects endogenous levels of total CTR1/SLC31A1
Immunogen Description	A synthesized peptide derived from human CTR1/SLC31A1
Other Names	COPT1; CTR1; hCTR1; SLC31A1;
Accession No.	Uniprot:O15431
Uniprot	O15431
Formulation	Rabbit IgG in phosphate buffered saline , pH 7.4, 150mM NaCl, 0.02% sodium azide and 50% glycerol.
Storage	Store at +4°C short term. Store at -20°C long term. Avoid freeze / thaw cycle.

## Application Details

WB 1:500~1:2000

## Images



Western blot analysis of CTR1/SLC31A1 expression in HeLa cell lysate.

## Product Description

High-affinity, saturable copper transporter involved in dietary copper uptake.

## Background

High-affinity, saturable copper transporter involved in dietary copper uptake.

---

Note: This product is for in vitro research use only