

# Galectin 3 Rabbit mAb

Catalog No: #60092



Package Size: #60092-1 50ul #60092-2 100ul

Orders: [order@signalwayantibody.com](mailto:order@signalwayantibody.com)  
Support: [tech@signalwayantibody.com](mailto:tech@signalwayantibody.com)

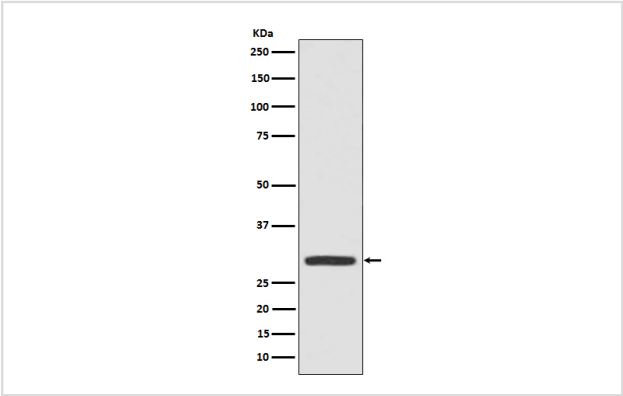
## Description

Product Name	Galectin 3 Rabbit mAb
Host Species	Rabbit
Clonality	Monoclonal
Isotype	Rabbit IgG
Purification	Affinity-chromatography
Applications	WB IHC ICC/IF FC
Species Reactivity	Human Mouse
Specificity	Galectin 3 Antibody detects endogenous levels of total Galectin 3
Immunogen Description	A synthesized peptide derived from human Galectin 3
Other Names	Carbohydrate binding protein 35; CBP35; GAL3; Galactose-specific lectin 3; GALBP; Galectin3; GALIG; GBP; IgE binding protein; L31; LGALS2; LGALS3;
Accession No.	Uniprot:P17931
Uniprot	P17931
Calculated MW	26kDa
Formulation	Rabbit IgG in phosphate buffered saline , pH 7.4, 150mM NaCl, 0.02% sodium azide and 50% glycerol.
Storage	Store at +4°C short term. Store at -20°C long term. Avoid freeze / thaw cycle.

## Application Details

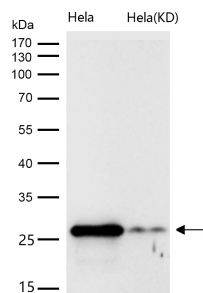
WB 1:500~1:2000 IHC 1:50~1:200 ICC/IF 1:50~1:200 FC 1:50

## Images



Western blot analysis of Galectin 3 expression in A431 cell lysate.

All lanes use the Antibody at 1:1K dilution for 1 hour at room temperature.



## Product Description

Galactose-specific lectin which binds IgE. May mediate with the alpha-3, beta-1 integrin the stimulation by CSPG4 of endothelial cells migration. Together with DMBT1, required for terminal differentiation of columnar epithelial cells during early embryogenesis.

## Background

Galactose-specific lectin which binds IgE. May mediate with the alpha-3, beta-1 integrin the stimulation by CSPG4 of endothelial cells migration. Together with DMBT1, required for terminal differentiation of columnar epithelial cells during early embryogenesis.

Note: This product is for in vitro research use only