

CD44 Rabbit mAb

Catalog No: #60093

Package Size: #60093-1 50ul #60093-2 100ul

Orders: order@signalwayantibody.comSupport: tech@signalwayantibody.com

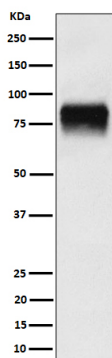
Description

Product Name	CD44 Rabbit mAb
Host Species	Rabbit
Clonality	Monoclonal
Isotype	Rabbit IgG
Purification	Affinity-chromatography
Applications	WB IHC ICC/IF IP FC
Species Reactivity	Human Mouse Rat
Specificity	CD44 Antibody detects endogenous levels of total CD44
Immunogen Description	A synthesized peptide derived from human CD44
Other Names	LHR; CD44; CD44 antigen; CDw44; chondroitin sulfate proteoglycan 8; CSPG8; Epican; HCELL; hematopoietic cell E- and L-selectin ligand; Heparan sulfate proteoglycan; Hermes antigen; HSA; HUTCH1; HUTCHI; Hyaluronate receptor; MDU2; MDU3; MIC4; MUTCH1; PGP1; Phagocytic glycoprotein 1; Soluble CD44;
Accession No.	Uniprot:P16070
Uniprot	P16070
Calculated MW	81kDa
Formulation	Rabbit IgG in phosphate buffered saline , pH 7.4, 150mM NaCl, 0.02% sodium azide and 50% glycerol.
Storage	Store at +4°C short term. Store at -20°C long term. Avoid freeze / thaw cycle.

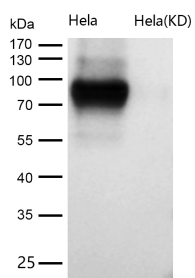
Application Details

WB 1:500~1:2000 IHC 1:50~1:200 ICC/IF 1:50~1:200 IP 1:50 FC 1:50

Images



Western blot analysis of CD44 expression in U-87 MG cell lysate.



All lanes use the Antibody at 1:1k dilution for 1 hour at room temperature.

Product Description

Mediates cell-cell and cell-matrix interactions through its affinity for HA, and possibly also through its affinity for other ligands such as osteopontin, collagens, and matrix metalloproteinases (MMPs).

Background

Mediates cell-cell and cell-matrix interactions through its affinity for HA, and possibly also through its affinity for other ligands such as osteopontin, collagens, and matrix metalloproteinases (MMPs).

Note: This product is for in vitro research use only