

## SF3A3 Rabbit mAb

Catalog No: #60148

Package Size: #60148-1 50ul #60148-2 100ul

Orders: order@signalwayantibody.com

Support: tech@signalwayantibody.com

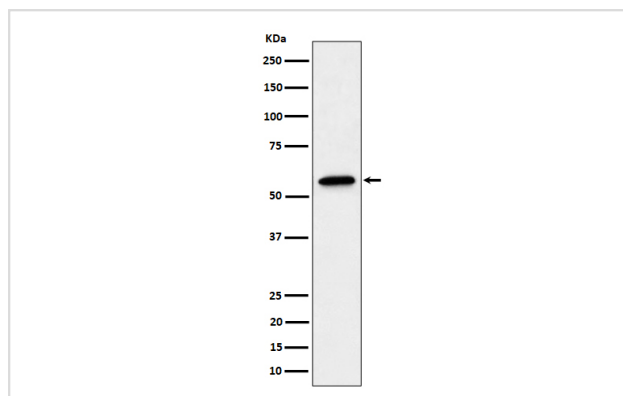
## Description

Product Name	SF3A3 Rabbit mAb
Host Species	Rabbit
Clonality	Monoclonal
Isotype	Rabbit IgG
Purification	Affinity-chromatography
Applications	WB IHC ICC/IF
Species Reactivity	Human Mouse Rat
Specificity	SF3A3 Antibody detects endogenous levels of total SF3A3
Immunogen Description	A synthesized peptide derived from human SF3A3
Other Names	SF3A3; PRP9; PRPF9; SAP61; SF3a60;
Accession No.	Uniprot:Q12874
Uniprot	Q12874
Formulation	Rabbit IgG in phosphate buffered saline , pH 7.4, 150mM NaCl, 0.02% sodium azide and 50% glycerol.
Storage	Store at +4°C short term. Store at -20°C long term. Avoid freeze / thaw cycle.

## Application Details

WB 1:500~1:2000 IHC 1:50~1:200 ICC/IF 1:50~1:200

## Images



Western blot analysis of SF3A3 expression in A431 cell lysate.

## Product Description

SF3A3 is subunit 3 of the splicing factor SF3A. Splicing factor 3a is a heterotrimer consisting of subunits 1, 2 and 3, and is necessary for the conversion of 15S U2 snRNP into an active 17S particle that performs pre-mRNA splicing. SF3A interacts with the pre-mRNA branch site early during spliceosome formation.

## Background

---

SF3A3 is subunit 3 of the splicing factor SF3A. Splicing factor 3a is a heterotrimer consisting of subunits 1, 2 and 3, and is necessary for the conversion of 15S U2 snRNP into an active 17S particle that performs pre-mRNA splicing. SF3A interacts with the pre-mRNA branch site early during spliceosome formation.

---

Note: This product is for in vitro research use only